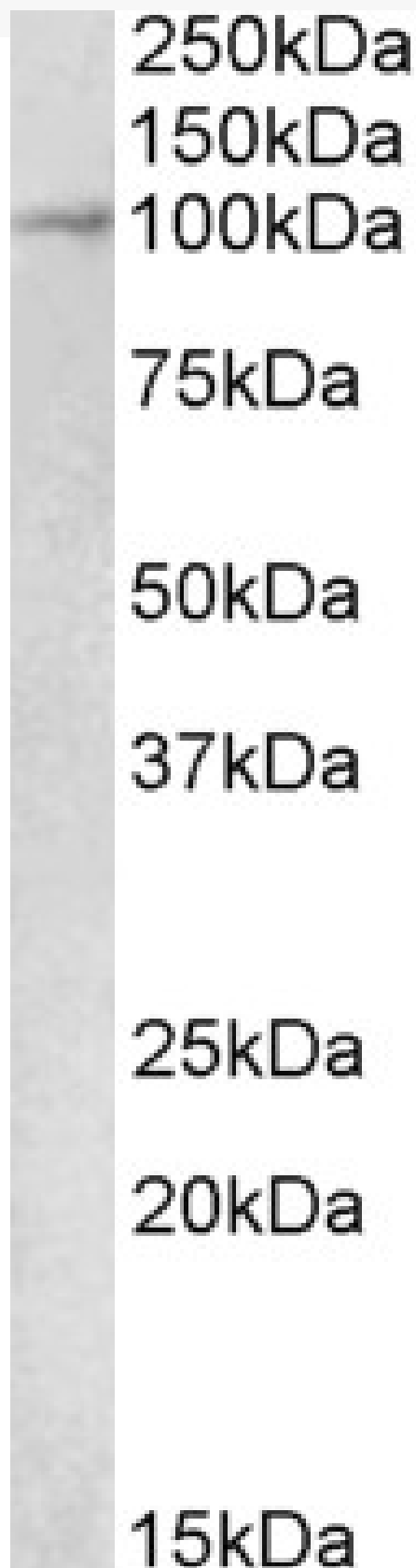


GOAT ANTI-MALT1 (RAT ISOFORM 2) ANTIBODY

SKU: EB10976



SPECIFICATIONS

Formulation Supplied at 0.5 mg/ml in Tris saline, 0.02% sodium azide, pH7.3 with 0.5% bovine serum albumin.

Unit Size 100 µg

Storage Instructions Aliquot and store at -20°C. Minimize freezing and thawing.

Synonym / Alias Names caspase-like protein| MALT-lymphoma associated translocation| MALT lymphoma-associated translocation| MALT associated translocation| MLT1| MLT| | mucosa associated lymphoid tissue lymphoma translocation gene 1|Malt1

Accession ID XP_225927.5

Blocking Peptide EBP10976

Immunogen Peptide with sequence C-RPDNKEQTGQPLAK, from the internal region of the protein sequence according to XP_225927.5.

Product Comments This antibody is expected to recognize reported isoform 2 (XP_225927.5) only.

Peptide Sequence C-RPDNKEQTGQPLAK

Purification Method Purified from goat serum by ammonium sulphate precipitation followed by antigen affinity chromatography using the immunizing peptide.

Shipping Instructions Refrigerated

Predicted Species Mouse, Rat

Reactive Species Mouse, Rat

Mouse Gene ID 240354

Rat Gene ID 307366

Product Grade https://prod-vector-labs-pimcore-assets.s3.us-east-1.amazonaws.com/assets/products/image/elite_medium.png

ELISA Detection Limit Antibody detection limit dilution 1:32000.

Western Blot Approx 100kDa band observed in Mouse and Rat Kidney lysates (calculated MW of 91.8kDa according to XP_225927.5). Recommended concentration: 1-3µg/ml.

Application Type Pep-ELISA, WB

DOCUMENTS

- [Data Sheet](#)

GALLERY IMAGES

