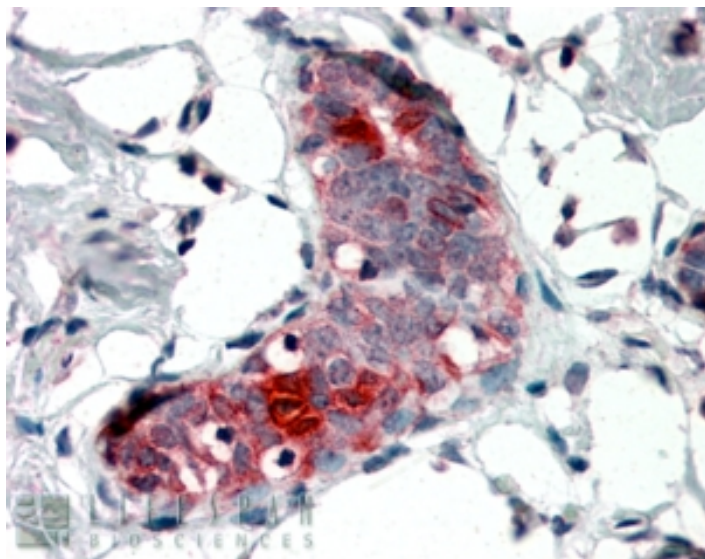


# GOAT ANTI-MAMMAGLOBIN A / SCGB2A2 ANTIBODY

**SKU:** EB06810



## SPECIFICATIONS

**Formulation** Supplied at 0.5 mg/ml in Tris saline, 0.02% sodium azide, pH7.3 with 0.5% bovine serum albumin.

**Unit Size** 100 µg

**Storage Instructions** Aliquot and store at -20°C. Minimize freezing and thawing.

**Synonym / Alias Names** SCGB2A2|secretoglobin, family 2A, member 2|HGNC:7050|MGB1|UGB2|MGC71974|mammaglobin 1|mammaglobin A

**Accession ID** NP\_002402.1

**Blocking Peptide** EBP06810

**Immunogen** Peptide with sequence C-NPQVSKTEYKEL, from the internal region of the protein sequence according to NP\_002402.1.

**Peptide Sequence** C-NPQVSKTEYKEL

**Purification Method** Purified from goat serum by ammonium sulphate precipitation followed by antigen affinity chromatography using the immunizing peptide.

**Shipping Instructions** Refrigerated

<b>Predicted Species</b>	Human
<b>Reactive Species</b>	Human
<b>Human Gene ID</b>	4250
<b>Product Grade</b>	<a href="https://prod-vector-labs-pimcore-assets.s3.us-east-1.amazonaws.com/assets/products/image/elite_medium.png">https://prod-vector-labs-pimcore-assets.s3.us-east-1.amazonaws.com/assets/products/image/elite_medium.png</a>
<b>IHC Results</b>	In paraffin embedded Human Breast shows staining of cytoplasm in some acinar cells.. Recommended concentration, 4-6µg/ml.
<b>ELISA</b>	
<b>Detection Limit</b>	Antibody detection limit dilution 1:32000.
<b>Western Blot</b>	Not yet tested - our routinely used western blotting protocol does not allow detection of proteins as small as the calculated size of 10.5kDa according to NP_002402.1. Therefore we cannot recommend an optimal concentration and the product is investigative grade. We would appreciate any feedback from people in the field - have any results been reported with other antibodies/lysates? Have any further splice variants/modified forms been reported?
<b>Application Type</b>	Pep-ELISA, IHC

## DOCUMENTS

- [Data Sheet](#)

## GALLERY IMAGES

