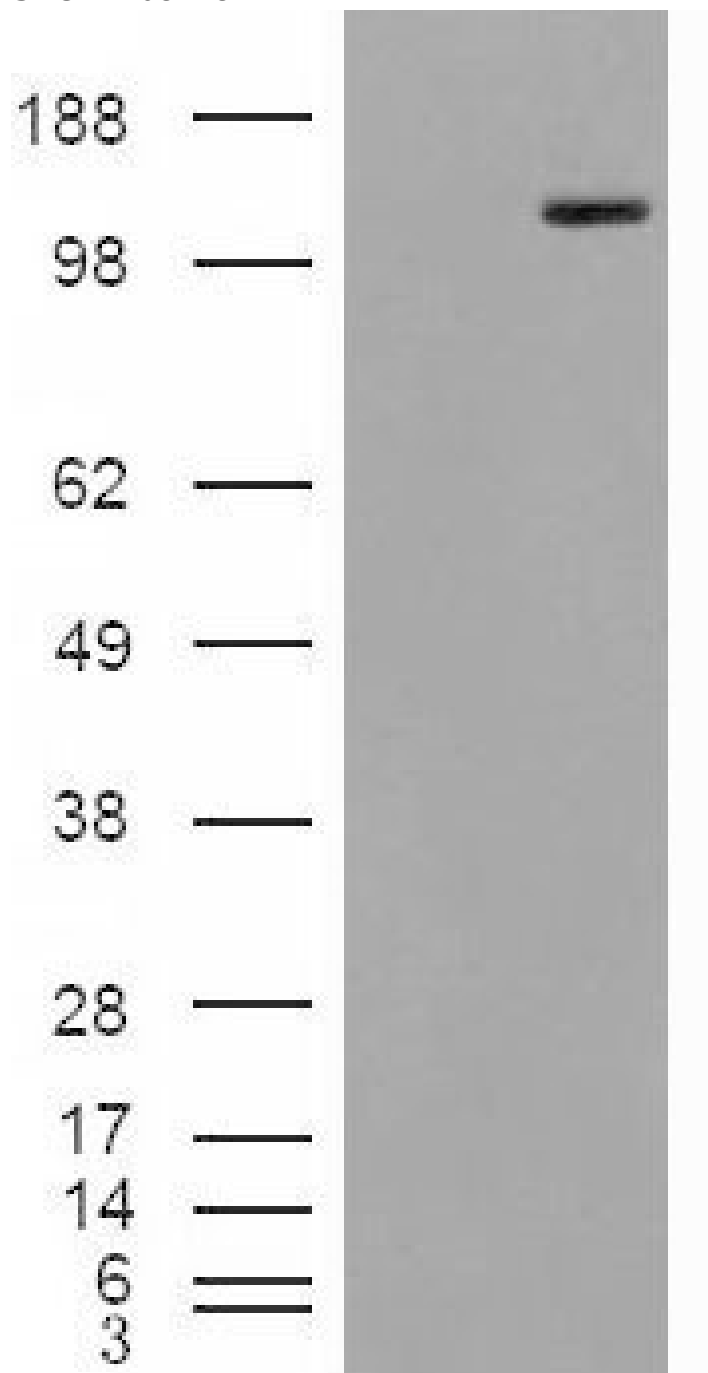


GOAT ANTI-MAN2A1 ANTIBODY

SKU: EB08228



SPECIFICATIONS

Formulation	Supplied at 0.5 mg/ml in Tris saline, 0.02% sodium azide, pH7.3 with 0.5% bovine serum albumin.
Unit Size	100 µg
Storage	Aliquot and store at -20°C. Minimize freezing and thawing.
Instructions	
Synonym / Alias Names	mannosyl-oligosaccharide 1, 3-1, 6-alpha-mannosidase mannosidase, alpha type II golgi integral membrane protein 7 Golgi alpha-mannosidase II MANII MANA2 GOLIM7 mannosidase, alpha, class 2A, member 1 MAN2A1
Accession ID	NP_002363.2
Blocking Peptide	EBP08228
Immunogen	Peptide with sequence C-KISSDIKSQNR, from the internal region of the protein sequence according to NP_002363.2.
Peptide Sequence	C-KISSDIKSQNR
Purification Method	Purified from goat serum by ammonium sulphate precipitation followed by antigen affinity chromatography using the immunizing peptide.
Shipping Instructions	Refrigerated
Predicted Species	Human
Reactive Species	Human
Human Gene ID	4124
Product Grade	https://prod-vector-labs-pimcore-assets.s3.us-east-1.amazonaws.com/assets/products/image/elite_medium.png
ELISA Detection Limit	Antibody detection limit dilution 1:16000.
Western Blot	Approx. 150kDa band observed in Human Placenta lysates (calculated MW of 131kDa according to NP_002363.2). In transfected HEK293 transiently expressing MAN2A1 a band of approx. 98kDa is observed. This band is not observed in the non-transfected HEK293. Recommended concentration: 1-3µg/ml. An anonymous customer found positive results in WB on Human dermal fibroblasts.
Application Type	Pep-ELISA, WB

DOCUMENTS

- [Data Sheet](#)

GALLERY IMAGES

