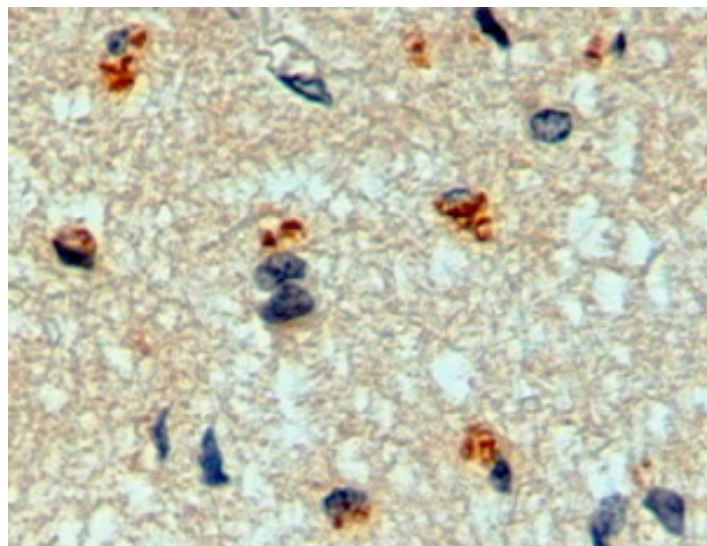


GOAT ANTI-MANIC FRINGE ANTIBODY

SKU: EB11527



SPECIFICATIONS

Formulation	Supplied at 0.5 mg/ml in Tris saline, 0.02% sodium azide, pH7.3 with 0.5% bovine serum albumin.
Unit Size	100 µg
Storage Instructions	Aliquot and store at -20°C. Minimize freezing and thawing.
Synonym / Alias Names	OTTHUMP00000197828 O-fucosylpeptide 3-beta-N-acetylglucosaminyltransferase MFNG O-fucosylpeptide 3-beta-N-acetylglucosaminyltransferase MFNG beta-1, 3-N-acetylglucosaminyltransferase manic fringe
Usage Summary	Immunofluorescence: Strong expression of the protein seen in the Golgi of U2OS cells. Recommended concentration: 10µg/ml. Flow Cytometry: Flow cytometric analysis of U2OS cells. Recommended concentration: 10ug/ml.
Accession ID	NP_002396.2; NP_001159815.1
Blocking Peptide	EBP11527
Immunogen	Peptide with sequence C-NRPIHASEPQPHNRT, from the internal region of the protein sequence according to NP_002396.2; NP_001159815.1.
Product Comments	This antibody is expected to recognize isoform 1 (NP_002396.2).
Peptide Sequence	C-NRPIHASEPQPHNRT

Purification Method	Purified from goat serum by ammonium sulphate precipitation followed by antigen affinity chromatography using the immunizing peptide.
Shipping Instructions	Refrigerated
Predicted Species	Human, Cow
Reactive Species	Human
Human Gene ID	4242
Product Grade	https://prod-vector-labs-pimcore-assets.s3.us-east-1.amazonaws.com/assets/products/image/elite_plus_medium.png
IHC Results	In paraffin embedded Human Cerebral Cortex shows Golgi-type staining in neuronal bodies. Recommended concentration: 2-4µg/ml.
ELISA	
Detection Limit	Antibody detection limit dilution 1:8000.
Application Type	Pep-ELISA, IHC, IF, FC

DOCUMENTS

- [Data Sheet](#)

GALLERY IMAGES

