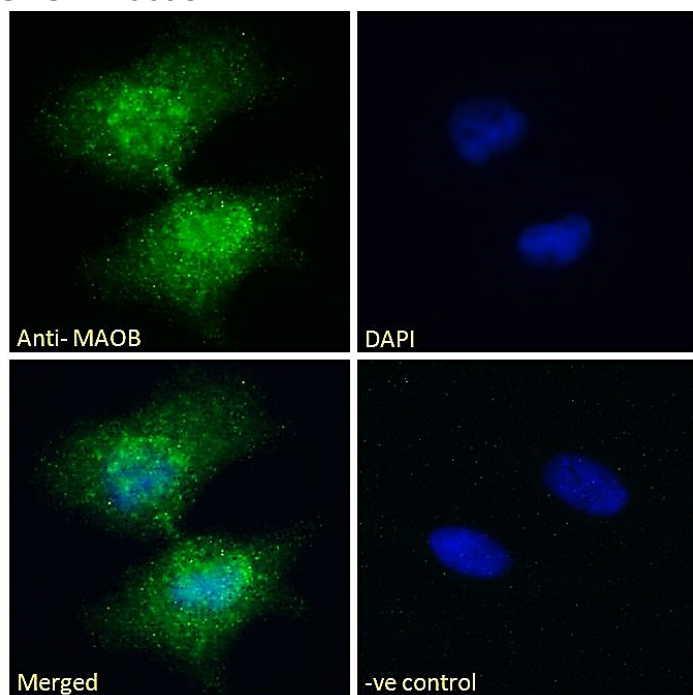


GOAT ANTI-MAOB ANTIBODY

SKU: EB06984



SPECIFICATIONS

Formulation Supplied at 0.5 mg/ml in Tris saline, 0.02% sodium azide, pH7.3 with 0.5% bovine serum albumin.

Unit Size 100 µg

Storage Instructions Aliquot and store at -20°C. Minimize freezing and thawing.

Synonym / Alias Names tyramine oxidase|amine oxidase (flavin-containing)|adrenalin oxidase|MAO, platelet|MAO, brain|RP1-201D17__B.1|MG26382|HGNC:6834|monoamine oxidase B|MAOB

Usage Summary **Immunofluorescence:** Strong expression of the protein seen in the nuclei and cytoplasm of HeLa cells. Recommended concentration: 10µg/ml. **Flow Cytometry:** Flow cytometric analysis of HepG2 cells. Recommended concentration: 10ug/ml.

Accession ID NP_000889.3

Blocking Peptide EBP06984

Immunogen Peptide with sequence C-HKARKLARLTKEE, from the internal region of the protein sequence according to NP_000889.3.

Product Comments	This antibody is not expected to cross-react with MAOA.
Peptide Sequence	C-HKARKLARLTKEE
Purification Method	Purified from goat serum by ammonium sulphate precipitation followed by antigen affinity chromatography using the immunizing peptide.
Shipping Instructions	Refrigerated
Predicted Species	Human, Mouse, Rat, Dog, Pig, Cow
Reactive Species	Human, Mouse
Human Gene ID	4129
Mouse Gene ID	109731
Product Grade	https://prod-vector-labs-pimcore-assets.s3.us-east-1.amazonaws.com/assets/products/image/elite_plus_medium.png
IHC Results	Paraffin embedded Human Testis. Recommended concentration: 4-5µg/ml.
ELISA Detection Limit	Antibody detection limit dilution 1:32000.
Western Blot	Approx 60kDa band observed in Human and Mouse Liver lysates and approx. 55-60kDa in Human Testis and Breast cancer lysates (calculated MW of 58.8kDa according to NP_000889.3). Recommended concentration: 0.1-0.3µg/ml. Primary incubation 1 hour at room temperature.
Application Type	Pep-ELISA, WB, IF, IHC, FC

DOCUMENTS

- [Data Sheet](#)

GALLERY IMAGES

