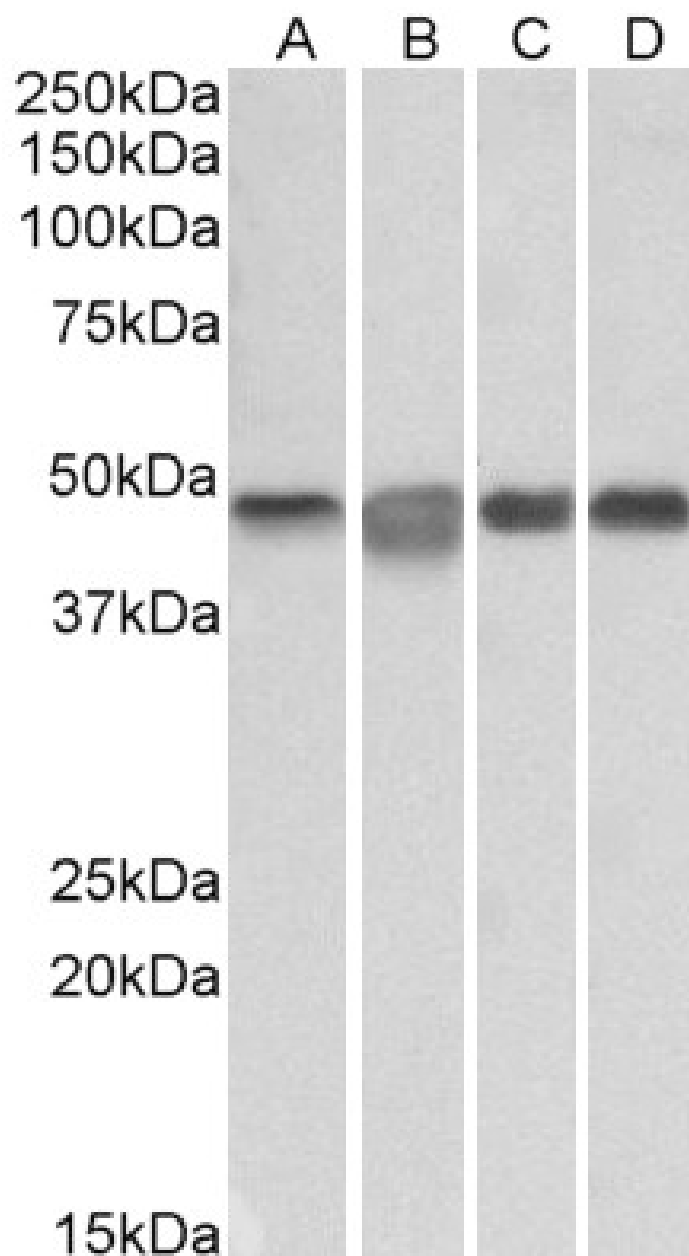


GOAT ANTI-MAP2K2 / MEK2 ANTIBODY

SKU: EB12289



SPECIFICATIONS

Formulation	Supplied at 0.5 mg/ml in Tris saline, 0.02% sodium azide, pH7.3 with 0.5% bovine serum albumin.
Unit Size	100 µg
Storage Instructions	Aliquot and store at -20°C. Minimize freezing and thawing.
Synonym / Alias Names	MAP2K2 mitogen-activated protein kinase kinase 2 MAPKK2 MEK2 MKK2 PRKMK2 ERK activator kinase 2 MAP kinase kinase 2 MAPK/ERK kinase 2 dual specificity mitogen-activated protein kinase kinase 2 mitogen-activated protein kinase kinase 2, p45
Accession ID	NP_109587.1
Blocking Peptide	EBP12289
Immunogen	Peptide with sequence C-DLKMLTNHTFIKRS, from the internal region of the protein sequence according to NP_109587.1.
Peptide Sequence	C-DLKMLTNHTFIKRS
Purification Method	Purified from goat serum by ammonium sulphate precipitation followed by antigen affinity chromatography using the immunizing peptide.
Shipping Instructions	Refrigerated
Predicted Species	Human
Reactive Species	Human
Human Gene ID	5605
Product Grade	https://prod-vector-labs-pimcore-assets.s3.us-east-1.amazonaws.com/assets/products/image/elite_medium.png
ELISA Detection Limit	Antibody detection limit dilution 1:128000.
Western Blot	Approx 48kDa band observed in lysates of cell lines Daudi, Jurkat, K562 and Molt4 (calculated MW of 44.4kDa according to NP_109587.1). Recommended concentration: 0.1-0.3µg/ml.
Application Type	Pep-ELISA, WB

DOCUMENTS

- [Data Sheet](#)

GALLERY IMAGES

