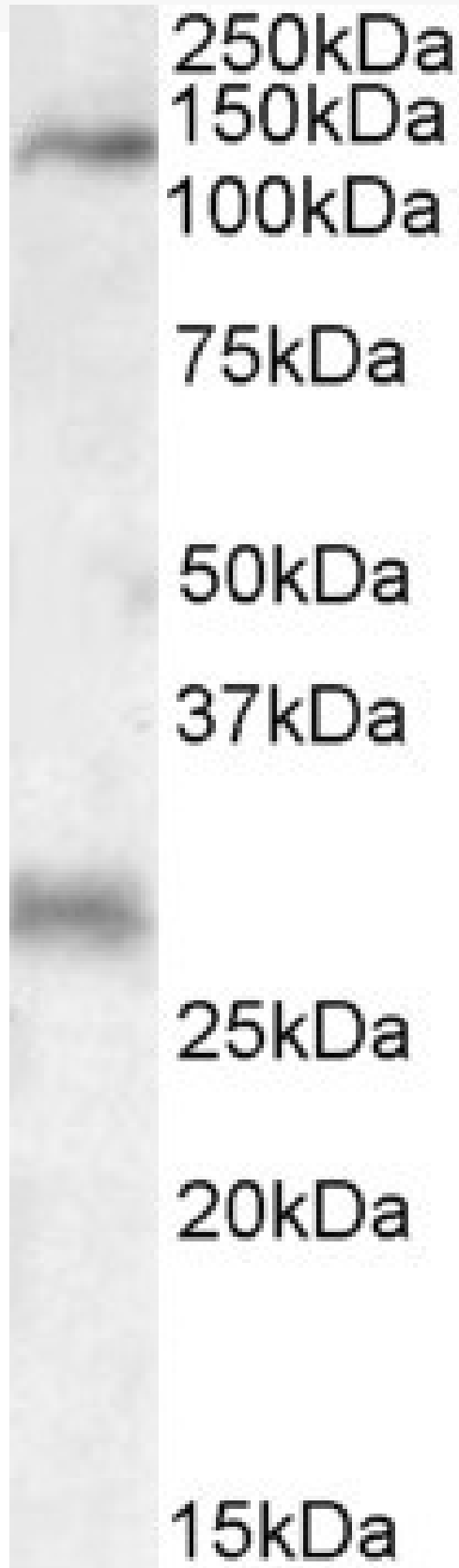


GOAT ANTI-MAP3K6 ANTIBODY

SKU: EB09554



SPECIFICATIONS

Formulation	Supplied at 0.5 mg/ml in Tris saline, 0.02% sodium azide, pH7.3 with 0.5% bovine serum albumin.
Unit Size	100 µg
Storage Instructions	Aliquot and store at -20°C. Minimize freezing and thawing.
Synonym / Alias Names	apoptosis signal-regulating kinase 2 OTTHUMP00000005063 MGC20114 MGC125653 MAPKKK6 ASK2 mitogen-activated protein kinase kinase kinase 6 MAP3K6
Accession ID	NP_004663.3
Blocking Peptide	EBP09554
Immunogen	Peptide with sequence C-RAILAQRAGSTP, from the C Terminus of the protein sequence according to NP_004663.3.
Peptide Sequence	C-RAILAQRAGSTP
Purification Method	Purified from goat serum by ammonium sulphate precipitation followed by antigen affinity chromatography using the immunizing peptide.
Shipping Instructions	Refrigerated
Predicted Species	Human, Mouse, Rat, Dog, Cow
Reactive Species	Rat
Human Gene ID	9064
Mouse Gene ID	313022
Rat Gene ID	53608
Product Grade	https://prod-vector-labs-pimcore-assets.s3.us-east-1.amazonaws.com/assets/products/image/elite_medium.png
ELISA Detection Limit	Antibody detection limit dilution 1:8000.
Western Blot	Approx 140kDa band observed in Rat Heart lysates (calculated MW of 143kDa according to Human NP_004663.3 and Rat NP_001101379.1). Recommended concentration: 0.3-1µg/ml. An additional band of unknown identity was also consistently observed at 28kDa. This band was successfully blocked by incubation with the immunizing peptide. We would appreciate any feedback from people in the field - have any such results been reported with other antibodies/lysates? Have any further splice variants/modified forms been reported?
Application Type	Pep-ELISA, WB

DOCUMENTS

- [Data Sheet](#)

GALLERY IMAGES

