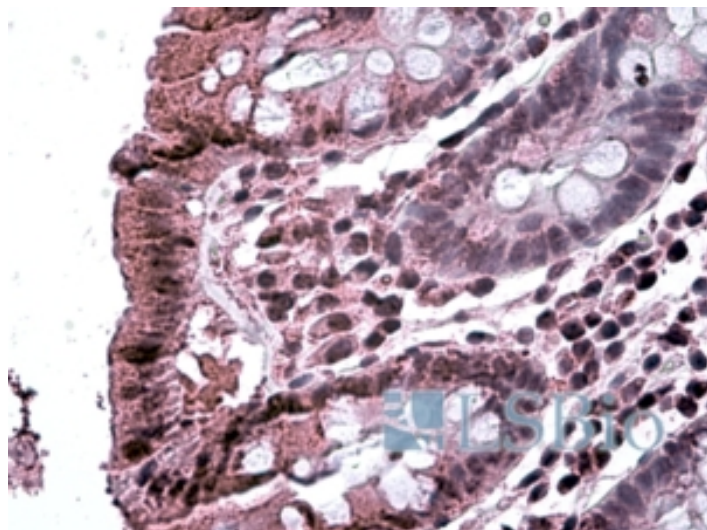


GOAT ANTI-MAP3K7IP2 ANTIBODY

SKU: EB09916



SPECIFICATIONS

Formulation Supplied at 0.5 mg/ml in Tris saline, 0.02% sodium azide, pH7.3 with 0.5% bovine serum albumin.

Unit Size 100 µg

Storage Instructions Aliquot and store at -20°C. Minimize freezing and thawing.

Synonym / Alias Names MAP3K7IP2|TAK1-binding protein 2|TAB2|OTTHUMP00000017388|mitogen-activated protein kinase kinase 7 interacting protein 2|KIAA0733|FLJ21885

Accession ID NP_055908.1

Blocking Peptide EBP09916

Immunogen Peptide with sequence C-SKGTSSLSQQTPR, from the internal region of the protein sequence according to NP_055908.1.

Peptide Sequence C-SKGTSSLSQQTPR

Purification Method Purified from goat serum by ammonium sulphate precipitation followed by antigen affinity chromatography using the immunizing peptide.

Shipping Instructions Refrigerated

Predicted Species	Human, Mouse, Rat, Dog, Cow
Reactive Species	Human
Human Gene ID	23118
Mouse Gene ID	68652
Rat Gene ID	308267
Product Grade	https://prod-vector-labs-pimcore-assets.s3.us-east-1.amazonaws.com/assets/products/image/elite_medium.png
IHC Results	In paraffin embedded Human Colon shows distinct staining of cytoplasm in epithelial cells and nuclear staining in the lamina propria. Recommended concentration, 3-6µg/ml.
ELISA	
Detection Limit	Antibody detection limit dilution 1:32000.
Application Type	Pep-ELISA, IHC

DOCUMENTS

- [Data Sheet](#)

GALLERY IMAGES

