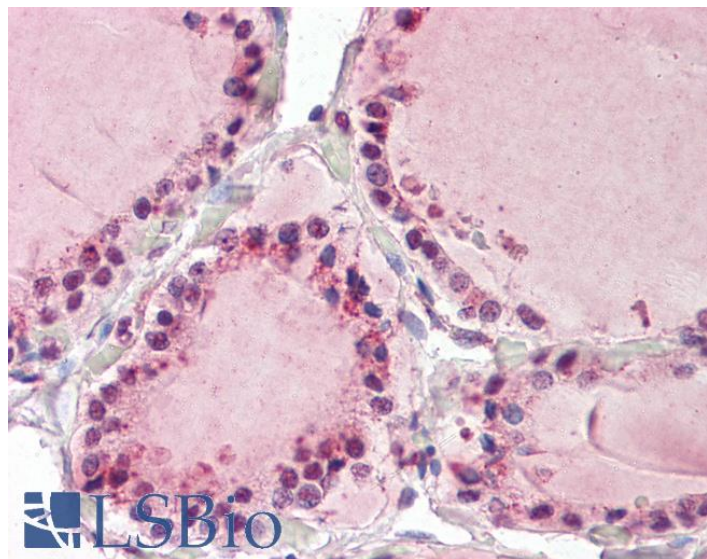


# GOAT ANTI-MAP3K7IP3 (AA 59 TO 69) ANTIBODY

SKU: EB08105



## SPECIFICATIONS

**Formulation** Supplied at 0.5 mg/ml in Tris saline, 0.02% sodium azide, pH7.3 with 0.5% bovine serum albumin.

**Unit Size** 100 µg

**Storage Instructions** Aliquot and store at -20°C. Minimize freezing and thawing.

**Synonym / Alias Names** MAP3K7IP3|mitogen-activated protein kinase kinase kinase 7 interacting protein 3|MGC45404|NAP1|TAB3|Mitogen-activated protein kinase kinase kinase 7-interacting protein 3|NF-kappa-B-activating protein 1|NFkB activating protein 1|TAK1 binding protein 3

**Accession ID** NP\_690000.2

**Blocking Peptide** EBP08105

**Immunogen** Peptide with sequence C-HSPDDNRMNRN, from the internal region of the protein sequence according to NP\_690000.2.

**Peptide Sequence** C-HSPDDNRMNRN

**Purification Method** Purified from goat serum by ammonium sulphate precipitation followed by antigen affinity chromatography using the immunizing peptide.

**Shipping Instructions** Refrigerated

<b>Predicted Species</b>	Human, Mouse
<b>Reactive Species</b>	Human
<b>Human Gene ID</b>	257397
<b>Mouse Gene ID</b>	66724
<b>Product Grade</b>	<a href="https://prod-vector-labs-pimcore-assets.s3.us-east-1.amazonaws.com/assets/products/image/elite_medium.png">https://prod-vector-labs-pimcore-assets.s3.us-east-1.amazonaws.com/assets/products/image/elite_medium.png</a>
<b>IHC Results</b>	Paraffin embedded Human Thyroid. Recommended concentration: 3.75µg/ml.
<b>ELISA Detection Limit</b>	Antibody detection limit dilution 1:32000.
<b>Western Blot</b>	Preliminary experiments gave an approx 100kDa band in Human Kidney lysates after 0.5µg/ml antibody staining. Please note that currently we cannot find an explanation in the literature for the band we observe given the calculated size of 78.7kDa according to NP_690000.2. The 100kDa band was successfully blocked by incubation with the immunizing peptide.
<b>Application Type</b>	Pep-ELISA, IHC

## DOCUMENTS

- [Data Sheet](#)

## GALLERY IMAGES

