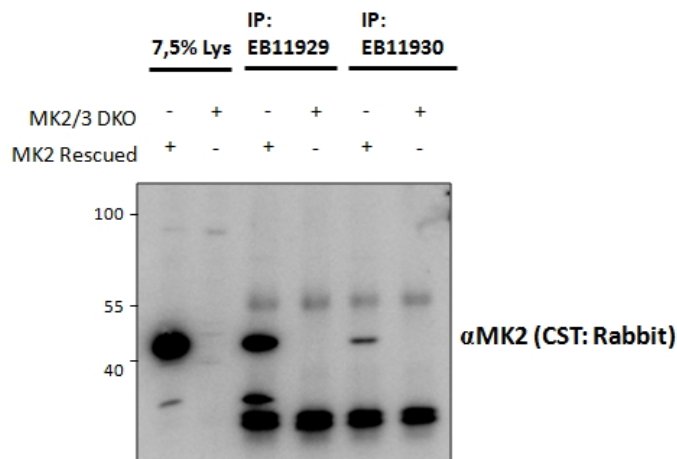


GOAT ANTI-MAPKAPK2 (AA44-55) ANTIBODY

SKU: EB11930



SPECIFICATIONS

Formulation Supplied at 0.5 mg/ml in Tris saline, 0.02% sodium azide, pH7.3 with 0.5% bovine serum albumin.

Unit Size 100 µg

Storage Instructions Aliquot and store at -20°C. Minimize freezing and thawing.

Synonym / Alias Names MAPKAPK2|mitogen-activated protein kinase-activated protein kinase 2|MAPKAP-K2|MK-2|MK2|MAP kinase-activated protein kinase 2|MAPK-activated protein kinase 2|MAPKAP kinase 2

Usage Summary **Immunoprecipitation:** MK2/MK3 double knockout Mouse Embryonic Fibroblasts (MEFs) retrovirally transduced with MK2 or empty vector were lysed from confluent plates and used for IP with 1.5µg EB11929 or EB11930. Western blots of the IP were labelled with rabbit anti-MK2 (CST). An approx 45kDa of MK2 is only precipitated from lysates of those KO MEFs that have been rescued by the MK2 expression construct as described in PMID: 19743408. Data obtained from Dr. M. B. Menon, Inst. Biochemistry, Hannover Medical School, Germany.

Accession ID NP_004750.1; NP_116584.2

Blocking Peptide EBP11930

Immunogen Peptide with sequence C-PQFHVKSGLQIK, from the internal region of the protein sequence according to NP_004750.1; NP_116584.2.

Product Comments This antibody is expected to recognize both reported isoforms (NP_004750.1; NP_116584.2).

Peptide Sequence	C-PQFHVKSGLQIK
Purification Method	Purified from goat serum by ammonium sulphate precipitation followed by antigen affinity chromatography using the immunizing peptide.
Shipping Instructions	Refrigerated
Predicted Species	Human, Mouse, Rat
Reactive Species	Mouse
Human Gene ID	9261
Mouse Gene ID	17164
Rat Gene ID	289014
Product Grade	https://prod-vector-labs-pimcore-assets.s3.us-east-1.amazonaws.com/assets/products/image/elite_medium.png
ELISA Detection Limit	Antibody detection limit dilution 1:32000.
Western Blot	In transfected HEK293 transiently expressing either Mouse MK2 fused to GFP or the similar Mouse MK5 fused to GFP, only the expected band was observed in the MK2 lane after EB11929 and EB11930 labeling. Data obtained from Dr. M. B. Menon, Inst. Biochemistry, Hannover Medical School, Germany. Recommended concentration: 0.5-2µg/ml.
Application Type	Pep-ELISA, WB-Trf, IP

DOCUMENTS

- [Data Sheet](#)

GALLERY IMAGES

