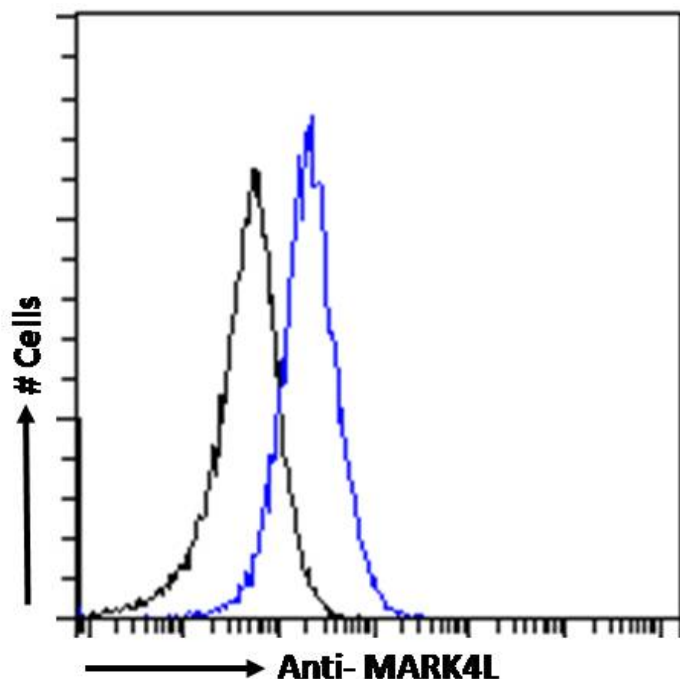


GOAT ANTI-MARK4L ANTIBODY

SKU: EB05383



SPECIFICATIONS

Formulation Supplied at 0.5 mg/ml in Tris saline, 0.02% sodium azide, pH7.3 with 0.5% bovine serum albumin.

Unit Size 100 µg

Storage Instructions Aliquot and store at -20°C. Minimize freezing and thawing.

Synonym / Alias Names putative protein product of Nbla00650|FLJ90097|MAP/microtubule affinity-regulating kinase like 1|MARK4 serine/threonine protein kinase|Nbla00650|KIAA1860|MARKL1|MAP/microtubule affinity-regulating kinase 4|MARK4

Usage Summary Flow Cytometry: Flow cytometric analysis of A431 cells. Recommended concentration: 10ug/ml.

Accession ID NP_113605.2

Blocking Peptide EBP05383

Immunogen Peptide with sequence IKRKPPPGCSDSPGV, from the C Terminus of the protein sequence according to NP_113605.2.

Product Comments	This antibody is expected to recognize the reported long isoform 1 (NP_113605.2) only.
Peptide Sequence	IKRKPPPGCSDSPGV
Purification Method	Purified from goat serum by ammonium sulphate precipitation followed by antigen affinity chromatography using the immunizing peptide.
Shipping Instructions	Refrigerated
Predicted Species	Human, Mouse
Reactive Species	Human, Mouse
Human Gene ID	57787
Product Grade	https://prod-vector-labs-pimcore-assets.s3.us-east-1.amazonaws.com/assets/products/image/elite_medium.png
ELISA Detection Limit	Antibody detection limit dilution 1:128000.
Western Blot	Approx 70kDa band observed in Human Cerebellum and Mouse Brain lysates, and in lysates of cell line U251 (calculated MW of 75.3kDa according to Human NP_113605.2 and 75.4kDa according to Mouse NP_001355356.1). This band was successfully blocked by incubation with the immunising peptide. Recommended concentration: 0.3-1µg/ml. Primary incubation 1 hour at room temperature.
Application Type	Pep-ELISA, WB, FC

DOCUMENTS

- [Data Sheet](#)

GALLERY IMAGES

