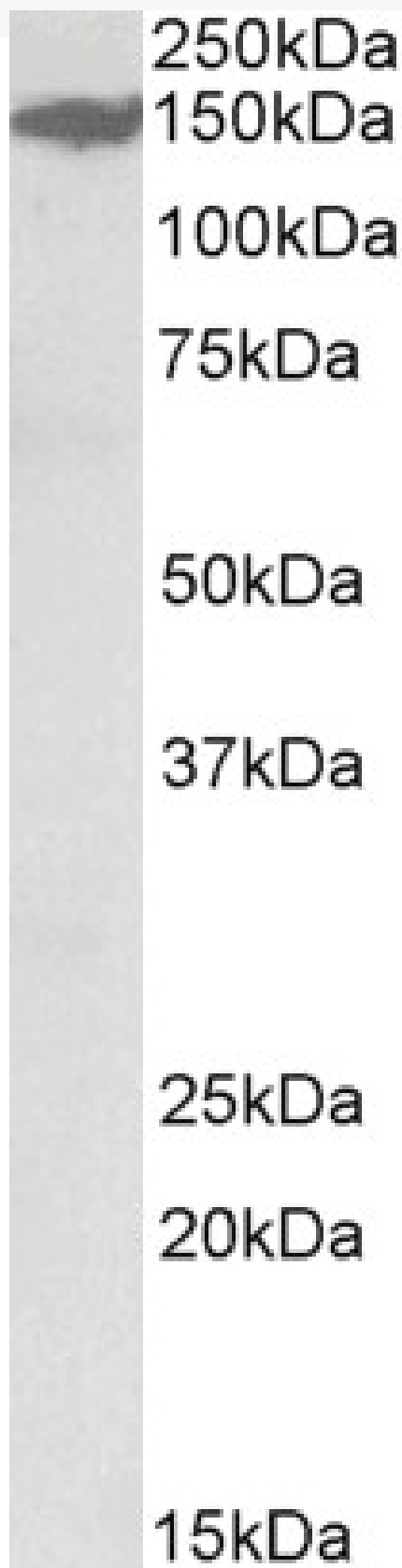


GOAT ANTI-MAST3 ANTIBODY

SKU: EB09225



SPECIFICATIONS

Formulation	Supplied at 0.5 mg/ml in Tris saline, 0.02% sodium azide, pH7.3 with 0.5% bovine serum albumin.
Unit Size	100 µg
Storage Instructions	Aliquot and store at -20°C. Minimize freezing and thawing.
Synonym / Alias Names	KIAA0561 microtubule associated serine/threonine kinase 3 MAST3
Accession ID	NP_055831.1
Blocking Peptide	EBP09225
Immunogen	Peptide with sequence C-DSFKKQEA VQEV S, from the internal region (near C-terminus) of the protein sequence according to NP_055831.1.
Peptide Sequence	C-DSFKKQEA VQEV S
Purification Method	Purified from goat serum by ammonium sulphate precipitation followed by antigen affinity chromatography using the immunizing peptide.
Shipping Instructions	Refrigerated
Predicted Species	Human, Mouse, Rat, Dog, Cow
Reactive Species	Rat
Human Gene ID	23031
Mouse Gene ID	546071
Rat Gene ID	688540
Product Grade	https://prod-vector-labs-pimcore-assets.s3.us-east-1.amazonaws.com/assets/products/image/elite_medium.png
ELISA Detection Limit	Antibody detection limit dilution 1:64000.
Western Blot	Approx 150kDa band observed in Rat Kidney lysates (calculated MW of 143kDa according to NP_055831.1). Recommended concentration: 0.3-1µg/ml.
Application Type	Pep-ELISA, WB

DOCUMENTS

- [Data Sheet](#)

GALLERY IMAGES

