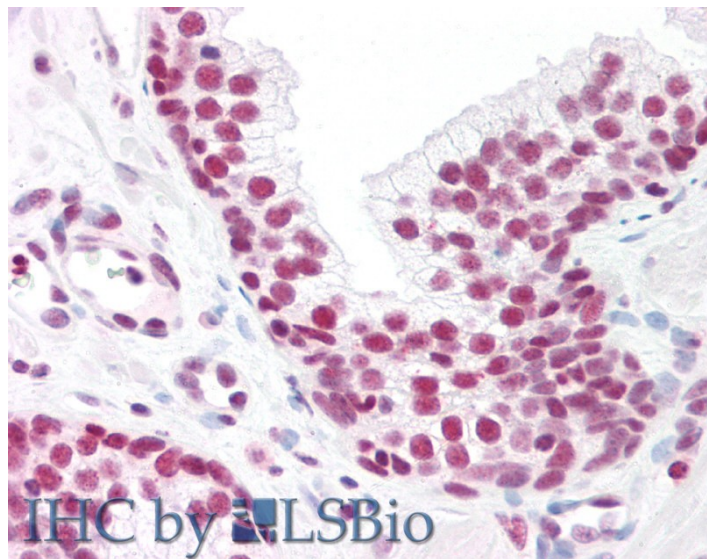


GOAT ANTI-MAX ANTIBODY

SKU: EB05058



SPECIFICATIONS

| | |
|------------------------------|---|
| Formulation | Supplied at 0.5 mg/ml in Tris saline, 0.02% sodium azide, pH7.3 with 0.5% bovine serum albumin. |
| Unit Size | 100 µg |
| Storage Instructions | Aliquot and store at -20°C. Minimize freezing and thawing. |
| Synonym / Alias Names | orf1 bHLHd8 bHLHd7 bHLHd6 bHLHd5 bHLHd4 MYC associated factor X helix-loop-helix zipper protein myc-associated factor X MGC36767 MGC34679 MGC18164 MGC11225 MGC10775 MAX protein MAX |
| Usage Summary | Immunofluorescence: Expression of the protein seen in the cytoplasm and nuclei of A431 and U251 cells. Recommended concentration: 10µg/ml. Additional validation: This antibody has been successfully used in the following paper: Sikorski et al. (2018) PMID: 30377371. |
| Accession ID | NP_002373.3; NP_660087.1 |
| Blocking Peptide | EBP05058 |
| Immunogen | Peptide with sequence C-EEPQSRKKLRMEAS, from the C Terminus of the protein sequence according to NP_002373.3; NP_660087.1. |
| Product Comments | This antibody is expected to recognize both reported isoforms (NP_002373.3; NP_660087.1). |
| Peptide Sequence | C-EEPQSRKKLRMEAS |

| | |
|------------------------------|---|
| Purification Method | Purified from goat serum by ammonium sulphate precipitation followed by antigen affinity chromatography using the immunizing peptide. |
| Shipping Instructions | Refrigerated |
| Predicted Species | Human, Mouse, Rat, Dog, Cow |
| Reactive Species | Human |
| Human Gene ID | 4149 |
| Mouse Gene ID | 17187 |
| Product Grade | https://prod-vector-labs-pimcore-assets.s3.us-east-1.amazonaws.com/assets/products/image/elite_plus_medium.png |
| IHC Results | Paraffin embedded Human Prostate. Recommended concentration: 10µg/ml. |
| ELISA | |
| Detection Limit | Antibody detection limit dilution 1:32000. |
| Western Blot | Approx 22kDa band observed in lysates of cell line Jurkat (calculated MW of 18.3kDa according to NP_002373.3). Recommended concentration: 0.01-0.03µg/ml. Primary incubation 1 hour at room temperature. |
| Application Type | Pep-ELISA, WB, IF, IHC |

SELECTED REFERENCES

[{"pmid": 30377371, "intro": "**This antibody has been successfully used in the following paper:**", "title": "A high-throughput pipeline for validation of antibodies", "author": "Krzysztof Sikorski, Adi Mehta, Marit Inngjerdingen, Flourina Thakor, Simon Kling, Tomas Kalina, Tuula A. Nyman, Maria Ekman Stensland, Wei Zhou, Gustavo A. De Souza, Lars Holden, Jan Stuchly, Markus Templin and Fridtjof Lund-Johansen", "journal": "Nat Methods. 2018 Nov;15(11):909-912"}]

DOCUMENTS

- [Data Sheet](#)

GALLERY IMAGES

