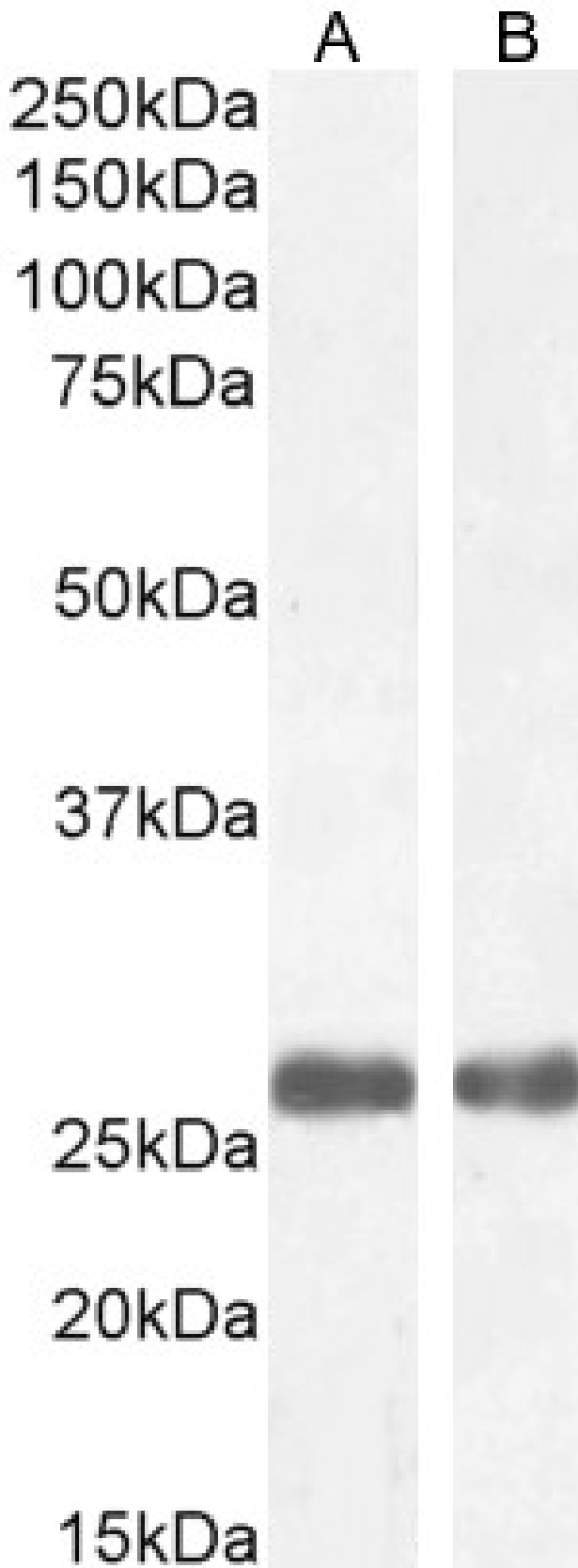


# GOAT ANTI-MBL2 / MANNAN-BINDING LECTIN ANTIBODY

**SKU:** EB06578



## SPECIFICATIONS

<b>Formulation</b>	Supplied at 0.5 mg/ml in Tris saline, 0.02% sodium azide, pH7.3 with 0.5% bovine serum albumin.
<b>Unit Size</b>	100 µg
<b>Storage Instructions</b>	Aliquot and store at -20°C. Minimize freezing and thawing.
<b>Synonym / Alias Names</b>	Mannose-binding lectin 2, soluble (opsonic defect) mannose binding protein mannan-binding protein mannose-binding lectin (protein C) 2, soluble (opsonic defect) HSMBPC COLEC1 MBP1 MBP MBL mannan-binding lectin MBL2
<b>Accession ID</b>	NP_000233.1
<b>Blocking Peptide</b>	EBP06578
<b>Immunogen</b>	Peptide with sequence STSHLAVCEFPI, from the C Terminus of the protein sequence according to NP_000233.1.
<b>Peptide Sequence</b>	STSHLAVCEFPI
<b>Purification Method</b>	Purified from goat serum by ammonium sulphate precipitation followed by antigen affinity chromatography using the immunizing peptide.
<b>Shipping Instructions</b>	Refrigerated
<b>Predicted Species</b>	Human
<b>Reactive Species</b>	Human
<b>Human Gene ID</b>	4153
<b>Product Grade</b>	<a href="https://prod-vector-labs-pimcore-assets.s3.us-east-1.amazonaws.com/assets/products/image/elite_medium.png">https://prod-vector-labs-pimcore-assets.s3.us-east-1.amazonaws.com/assets/products/image/elite_medium.png</a>
<b>ELISA Detection Limit</b>	Antibody detection limit dilution 1:2000.
<b>Western Blot</b>	Approx 26kDa band observed in Human Heart and Liver lysates (calculated MW of 26.1kDa according to NP_000233). Recommended concentration: 1-3µg/ml. Primary incubation 1 hour at room temperature.
<b>Application Type</b>	Pep-ELISA, WB

## DOCUMENTS

- [Data Sheet](#)

## GALLERY IMAGES

