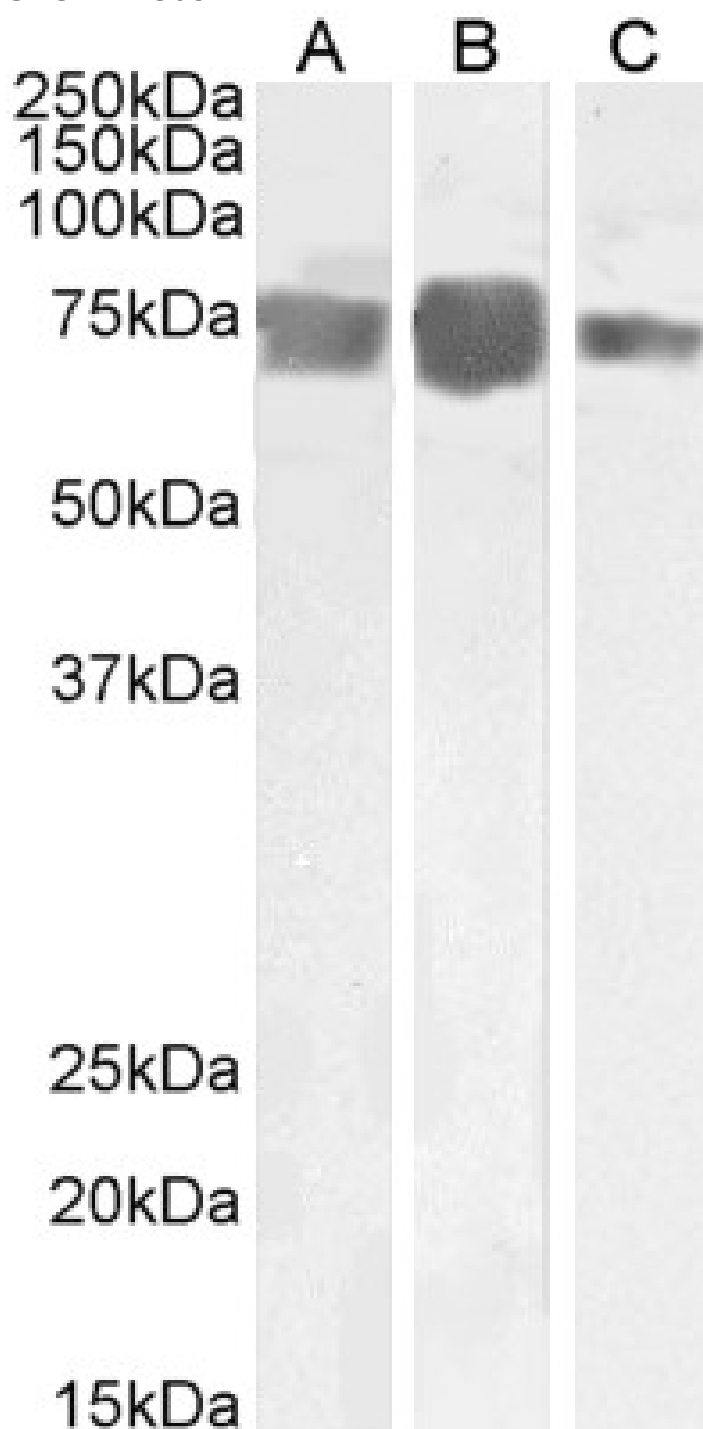


GOAT ANTI-MCAM / CD146/ MUC18 ANTIBODY

SKU: EB13081



SPECIFICATIONS

Formulation	Supplied at 0.5 mg/ml in Tris saline, 0.02% sodium azide, pH7.3 with 0.5% bovine serum albumin.
Unit Size	100 µg
Storage Instructions	Aliquot and store at -20°C. Minimize freezing and thawing.
Synonym / Alias Names	melanoma-associated antigen A32 melanoma adhesion molecule cell surface glycoprotein P1H12 cell surface glycoprotein MUC18 S-endo 1 endothelial-associated antigen Gicerin MUC18 CD146 melanoma cell adhesion molecule MCAM
Accession ID	NP_006491.2
Blocking Peptide	EBP13081
Immunogen	Peptide with sequence C-EPARKEHSGR, from the internal region of the protein sequence according to NP_006491.2.
Peptide Sequence	C-EPARKEHSGR
Purification Method	Purified from goat serum by ammonium sulphate precipitation followed by antigen affinity chromatography using the immunizing peptide.
Shipping Instructions	Refrigerated
Predicted Species	Human
Reactive Species	Human
Human Gene ID	4162
Product Grade	https://prod-vector-labs-pimcore-assets.s3.us-east-1.amazonaws.com/assets/products/image/elite_medium.png
ELISA	
Detection Limit	Antibody detection limit dilution 1:8000.
Western Blot	Approx 70-75kDa band observed in Human Heart, Placenta and Umbilical Cord lysates (calculated MWt of 71.5kDa according to NP_006491.2) Recommended concentration: 0.1-0.3µg/ml.
Application Type	Pep-ELISA, WB

DOCUMENTS

- [Data Sheet](#)

GALLERY IMAGES

