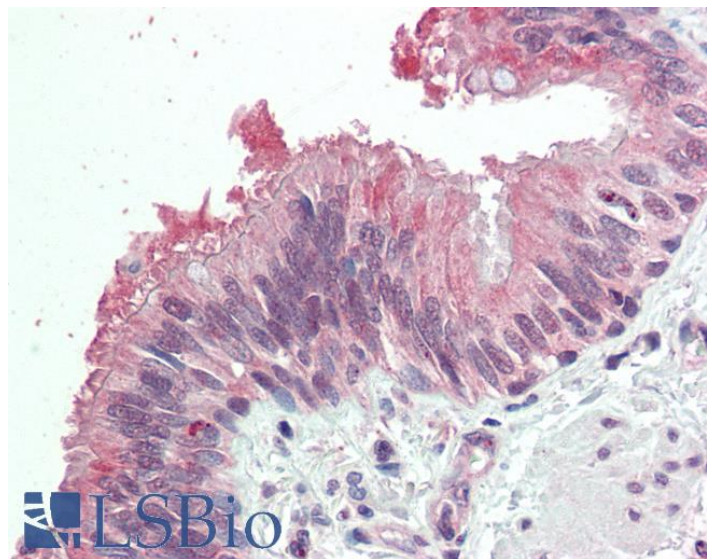


GOAT ANTI-MDFI ANTIBODY

SKU: EB09464



SPECIFICATIONS

Formulation Supplied at 0.5 mg/ml in Tris saline, 0.02% sodium azide, pH7.3 with 0.5% bovine serum albumin.

Unit Size 100 µg

Storage Instructions Aliquot and store at -20°C. Minimize freezing and thawing.

Synonym / Alias Names inhibitor of MyoD family a|OTTHUMP00000196414|OTTHUMP00000016375|I-mfa|I-MF|MyoD family inhibitor|MDFI

Accession ID NP_005577.1

Blocking Peptide EBP09464

Immunogen Peptide with sequence C-SKSTTSQIPLQAQED, from the internal region of the protein sequence according to NP_005577.1.

Peptide Sequence C-SKSTTSQIPLQAQED

Purification Method Purified from goat serum by ammonium sulphate precipitation followed by antigen affinity chromatography using the immunizing peptide.

Shipping Instructions Refrigerated

Predicted Species	Human
Reactive Species	Human
Human Gene ID	4188
Product Grade	https://prod-vector-labs-pimcore-assets.s3.us-east-1.amazonaws.com/assets/products/image/elite_medium.png
IHC Results	Paraffin embedded Human Lung (Bronchus). Recommended concentration: 5µg/ml.
ELISA	
Detection Limit	Antibody detection limit dilution 1:16000.
Application Type	Pep-ELISA, IHC

DOCUMENTS

- [Data Sheet](#)

GALLERY IMAGES

