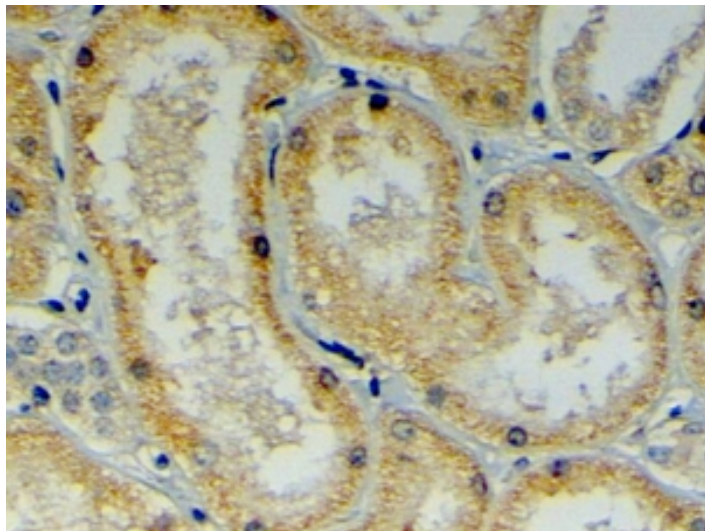


# GOAT ANTI-MDG1 / DNAJB9 ANTIBODY

**SKU:** EB06289



## SPECIFICATIONS

**Formulation** Supplied at 0.5 mg/ml in Tris saline, 0.02% sodium azide, pH7.3 with 0.5% bovine serum albumin.

**Unit Size** 100 µg

**Storage Instructions** Aliquot and store at -20°C. Minimize freezing and thawing.

**Synonym / Alias Names** MSTP049|MST049|microvascular endothelial differentiation gene 1|endoplasmic reticulum DnaJ homolog 4|DnaJ (Hsp40) homolog, subfamily B, member 9|DKFZP564F1862|ERdj4|MDG1|DNAJB9

**Accession ID** NP\_036460.1

**Blocking Peptide** EBP06289

**Immunogen** Peptide with sequence RGNMVTYTDGSGQ, from the C Terminus of the protein sequence according to NP\_036460.1.

**Peptide Sequence** RGNMVTYTDGSGQ

**Purification Method** Purified from goat serum by ammonium sulphate precipitation followed by antigen affinity chromatography using the immunizing peptide.

**Shipping Instructions** Refrigerated

<b>Predicted Species</b>	Human, Mouse, Rat, Dog, Cow
<b>Reactive Species</b>	Human
<b>Human Gene ID</b>	4189
<b>Mouse Gene ID</b>	27362
<b>Rat Gene ID</b>	24908
<b>Product Grade</b>	<a href="https://prod-vector-labs-pimcore-assets.s3.us-east-1.amazonaws.com/assets/products/image/elite_medium.png">https://prod-vector-labs-pimcore-assets.s3.us-east-1.amazonaws.com/assets/products/image/elite_medium.png</a>
<b>IHC Results</b>	In paraffin embedded Human Kidney shows ER staining in PCT. Recommended concentration: 4-6µg/ml.
<b>ELISA</b>	
<b>Detection Limit</b>	Antibody detection limit dilution 1:4000.
<b>Application Type</b>	Pep-ELISA, IHC

## DOCUMENTS

- [Data Sheet](#)

## GALLERY IMAGES

