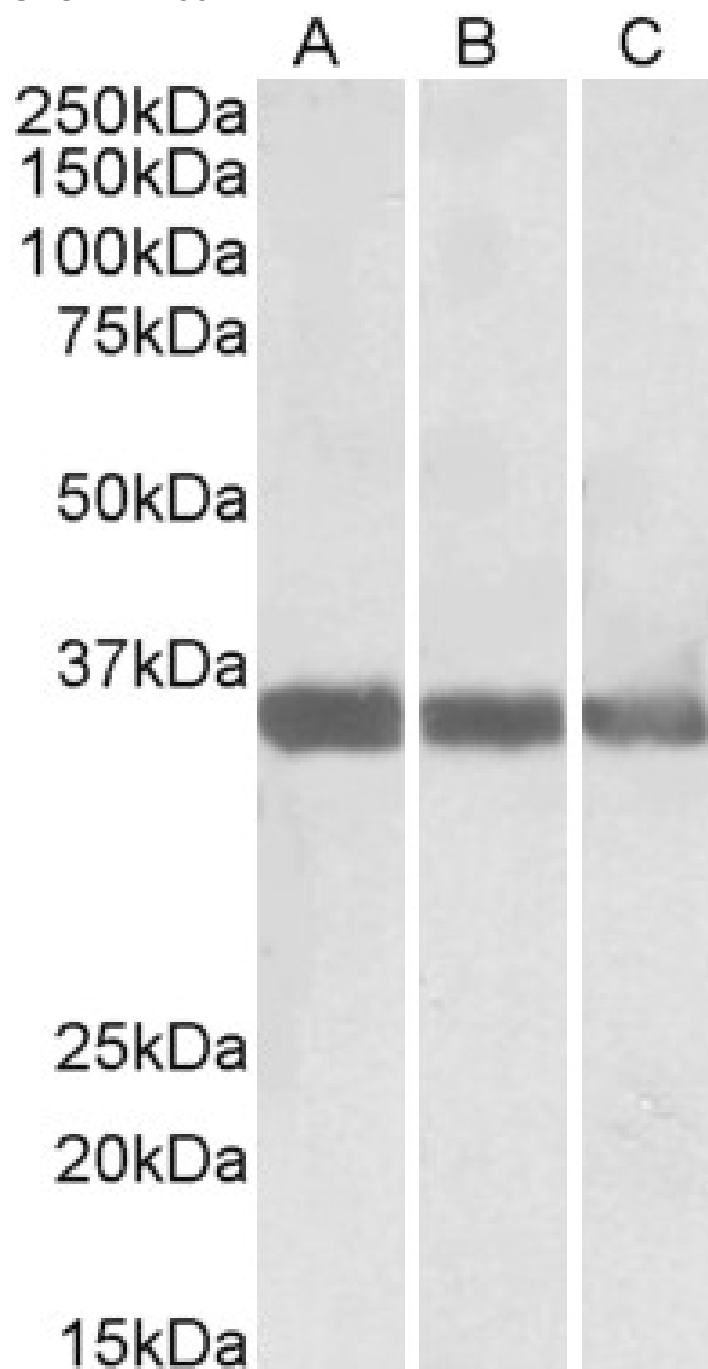


GOAT ANTI-MDH1 / MOR2 ANTIBODY

SKU: EB11994



SPECIFICATIONS

Formulation	Supplied at 0.5 mg/ml in Tris saline, 0.02% sodium azide, pH7.3 with 0.5% bovine serum albumin.
Unit Size	100 µg
Storage Instructions	Aliquot and store at -20°C. Minimize freezing and thawing.
Synonym / Alias Names	soluble malate dehydrogenase malate dehydrogenase, cytoplasmic cytosolic malate dehydrogenase MOR2 MGC:1375 MDHA MDH-s malate dehydrogenase 1, NAD (soluble) MDH1
Accession ID	NP_001186040.1; NP_005908.1; NP_001186041.1
Blocking Peptide	EBP11994
Immunogen	Peptide with sequence TNCLTASKSAPSIPK, from the internal region of the protein sequence according to NP_001186040.1; NP_005908.1; NP_001186041.1.
Product Comments	This antibody is expected to recognize all reported isoforms (NP_001186040.1; NP_005908.1; NP_001186041.1).
Peptide Sequence	TNCLTASKSAPSIPK
Purification Method	Purified from goat serum by ammonium sulphate precipitation followed by antigen affinity chromatography using the immunizing peptide.
Shipping Instructions	Refrigerated
Predicted Species	Human, Mouse, Rat, Dog, Pig, Cow
Reactive Species	Human, Mouse, Rat, Pig
Human Gene ID	4190
Mouse Gene ID	17449
Rat Gene ID	24551
Product Grade	https://prod-vector-labs-pimcore-assets.s3.us-east-1.amazonaws.com/assets/products/image/elite_medium.png
ELISA Detection Limit	Antibody detection limit dilution 1:128000.
Western Blot	Approx 36kDa band observed in Human, Mouse, Rat and Pig Heart lysates (calculated MW of 36.4kDa according to NP_005908.1). Recommended concentration: 0.01-0.03µg/ml.
Application Type	Pep-ELISA, WB

DOCUMENTS

- [Data Sheet](#)

GALLERY IMAGES

