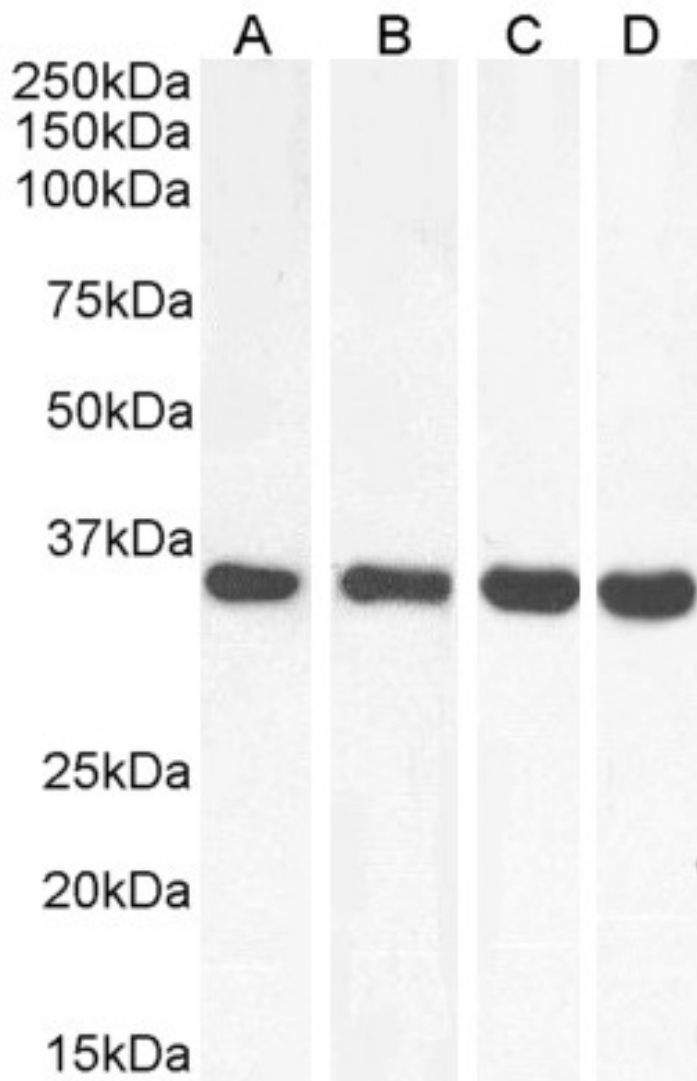


## GOAT ANTI-MDH2 ANTIBODY

**SKU:** EB13027



---

## SPECIFICATIONS

**Formulation** Supplied at 0.5 mg/ml in Tris saline, 0.02% sodium azide, pH7.3 with 0.5% bovine serum albumin.

**Unit Size** 100 µg

<b>Storage Instructions</b>	Aliquot and store at -20°C. Minimize freezing and thawing.
<b>Synonym / Alias Names</b>	malate dehydrogenase, mitochondrial MOR1 MGC:3559 MDH M-MDH malate dehydrogenase 2, NAD (mitochondrial) MDH2
<b>Accession ID</b>	NP_005909.2
<b>Blocking Peptide</b>	EBP13027
<b>Immunogen</b>	Peptide with sequence C-TRDDLFNTNAT, from the internal region of the protein sequence according to NP_005909.2.
<b>Peptide Sequence</b>	C-TRDDLFNTNAT
<b>Purification Method</b>	Purified from goat serum by ammonium sulphate precipitation followed by antigen affinity chromatography using the immunizing peptide.
<b>Shipping Instructions</b>	Refrigerated
<b>Predicted Species</b>	Human, Mouse, Rat, Pig, Cow
<b>Reactive Species</b>	Human, Mouse, Rat, Pig
<b>Human Gene ID</b>	4191
<b>Mouse Gene ID</b>	17448
<b>Rat Gene ID</b>	81829
<b>Product Grade</b>	<a href="https://prod-vector-labs-pimcore-assets.s3.us-east-1.amazonaws.com/assets/products/image/elite_medium.png">https://prod-vector-labs-pimcore-assets.s3.us-east-1.amazonaws.com/assets/products/image/elite_medium.png</a>
<b>IHC Results</b>	Paraffin embedded Human Skeletal Muscle. Recommended concentration: 5µg/ml.
<b>ELISA Detection Limit</b>	Antibody detection limit dilution 1:8000.
<b>Western Blot</b>	Approx 35kDa band observed in lysates of cell lines HeLa, HepG2 and NIH3T3 (calculated MW of 35.5kDa according to Human NP_005909.2 and 35.6kDa according to Mouse NP_032643.2 ). Recommended concentration: 0.1-0.3µg/ml. Primary incubation was 1 hour. Approx 35kDa band observed in Human, Mouse, Rat and Pig Heart lysates (calculated MW of 35.5kDa according to Human NP_005909.2 and 35.6kDa according to Mouse NP_032643.2, Rat NP_112413.2 and Pig NP_001231082.1 ). Recommended concentration: 0.01-0.03µg/ml. Primary incubation was 1 hour. This antibody has been successfully used in WB on Human, PMID: 38609156.
<b>Application Type</b>	Pep-ELISA, WB, IHC

## SELECTED REFERENCES

[{"pmid": 38609156, "intro": "**This antibody has been successfully used in WB on Human:**", "title": "Cytosolic RNA binding of the mitochondrial TCA cycle enzyme malate dehydrogenase.", "author": "Michelle Noble, Aindrila Chatterjee, Thileepan Sekaran, Thomas Schwarzl, Matthias W Hentze", "journal": "RNA. 2024 Jun 17;30(7):839-853."}]

## DOCUMENTS

- [Data Sheet](#)

## GALLERY IMAGES

