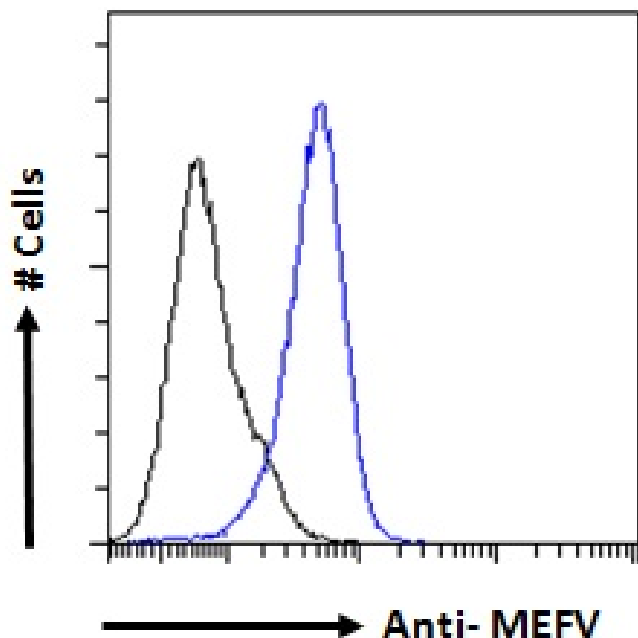


GOAT ANTI-MEFV ANTIBODY

SKU: EB06877



SPECIFICATIONS

Formulation Supplied at 0.5 mg/ml in Tris saline, 0.02% sodium azide, pH7.3 with 0.5% bovine serum albumin.

Unit Size 100 µg

Storage Instructions Aliquot and store at -20°C. Minimize freezing and thawing.

Synonym / Alias Names marenastrin|MGC126586|MGC126560|pyrin|Mediterranean fever protein|TRIM20|MEF|FMF|HGNC:6998|Mediterranean fever|MEFV

Usage Summary **Immunofluorescence:** Strong expression of the protein seen in the nuclei of A431 cells. Recommended concentration: 10µg/ml. **Flow Cytometry:** Flow cytometric analysis of A431 cells. Recommended concentration: 10ug/ml.

Accession ID NP_000234.1; NP_001185465.1

Blocking Peptide EBP06877

Immunogen Peptide with sequence C-EHLKKLRKSGEEQ, from the internal region of the protein sequence according to NP_000234.1; NP_001185465.1.

Peptide Sequence	C-EHLKKLRKSGEEQ
Purification Method	Purified from goat serum by ammonium sulphate precipitation followed by antigen affinity chromatography using the immunizing peptide.
Shipping Instructions	Refrigerated
Predicted Species	Human
Reactive Species	Human
Human Gene ID	4210
Product Grade	https://prod-vector-labs-pimcore-assets.s3.us-east-1.amazonaws.com/assets/products/image/elite_medium.png
ELISA Detection Limit	Antibody detection limit dilution 1:8000.
Application Type	Pep-ELISA, IF, FC

DOCUMENTS

- [Data Sheet](#)

GALLERY IMAGES

