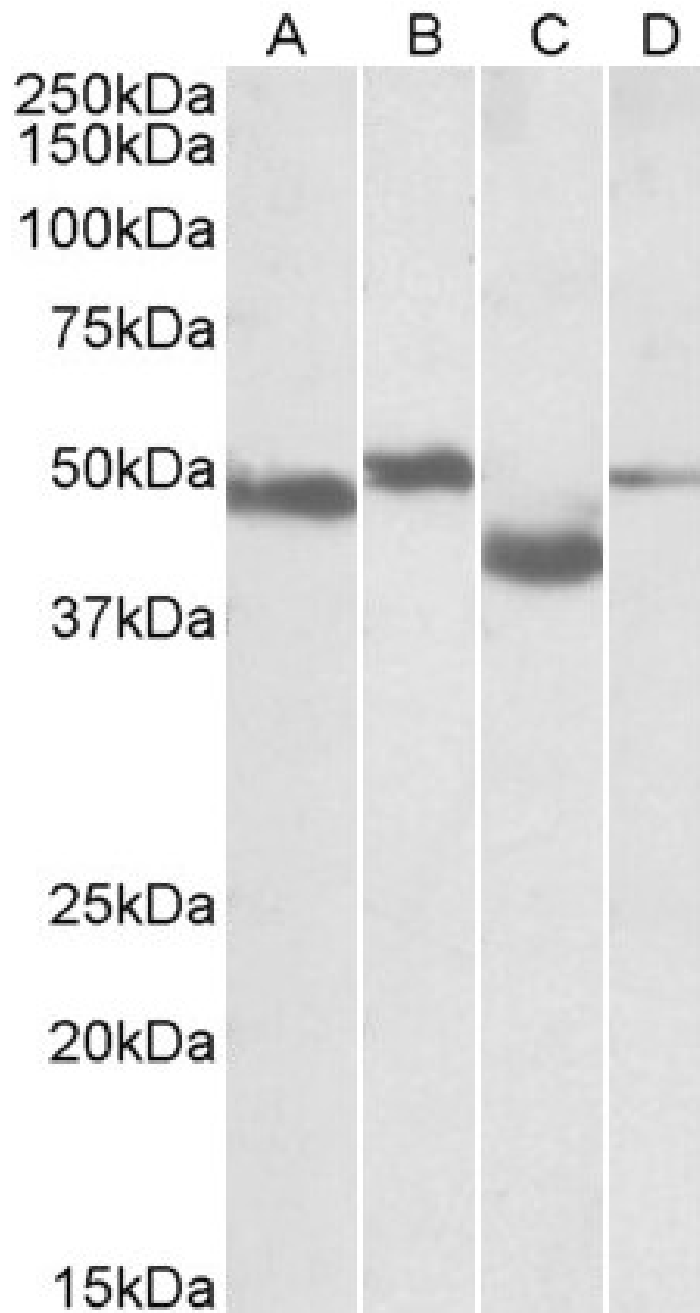




## GOAT ANTI-MEIS2 ANTIBODY

SKU: EB10049





# SPECIFICATIONS

<b>Formulation</b>	Supplied at 0.5 mg/ml in Tris saline, 0.02% sodium azide, pH7.3 with 0.5% bovine serum albumin.
<b>Unit Size</b>	100 µg
<b>Storage Instructions</b>	Aliquot and store at -20°C. Minimize freezing and thawing.
<b>Synonym / Alias Names</b>	MEIS2 TALE homeobox protein Meis2 OTTHUMP00000160209 MRG1 MGC2820 Meis1-related gene 1 Meis1, myeloid ecotropic viral integration site 1 homolog 2 Meis homolog 2 Meis homeobox 2 HsT18361
<b>Accession ID</b>	NP_733777.1; NP_733775.1; NP_758526.1
<b>Blocking Peptide</b>	EBP10049
<b>Immunogen</b>	Peptide with sequence C-QSNRAGFLDPSVSQ, from the internal region of the protein sequence according to NP_733777.1; NP_733775.1; NP_758526.1. This antibody is expected to recognize reported Human isoforms a (NP_733777.1), c (NP_733775.1), and g (NP_758526.1), and reported Mouse isoforms 3, 4 and 5 (NP_001153039.1, NP_001153040.1, NP_001153041.1). NB: The immunizing peptide shows no overlap with the reported PROVISIONAL Rat protein NP_001101228.1 but is does with UniprotKB entry D4A2T5.
<b>Product Comments</b>	
<b>Peptide Sequence</b>	C-QSNRAGFLDPSVSQ
<b>Purification Method</b>	Purified from goat serum by ammonium sulphate precipitation followed by antigen affinity chromatography using the immunizing peptide.
<b>Shipping Instructions</b>	Refrigerated
<b>Predicted Species</b>	Human, Mouse, Dog, Cow
<b>Reactive Species</b>	Mouse, Rat
<b>Human Gene ID</b>	4212
<b>Product Grade</b>	<a href="https://prod-vector-labs-pimcore-assets.s3.us-east-1.amazonaws.com/assets/products/image/elite_medium.png">https://prod-vector-labs-pimcore-assets.s3.us-east-1.amazonaws.com/assets/products/image/elite_medium.png</a>
<b>ELISA Detection Limit</b>	Antibody detection limit dilution 1:16000.
<b>Western Blot</b>	Approx 50kDa bands observed in Rat Brain and Rat Thymus lysates, 48kDa band in Mouse Brain and 40kDa in Mouse Thymus (calculated MW of 51.8kDa according to Human NP_733775.1 and Mouse NP_001153040.1, and of 43.7kDa according to Mouse NP_001153039.1 and NP_001153041.1). Recommended concentration: 0.1-0.3 µg/ml.
<b>Application Type</b>	Pep-ELISA, WB

# DOCUMENTS

- [Data Sheet](#)



## GALLERY IMAGES

