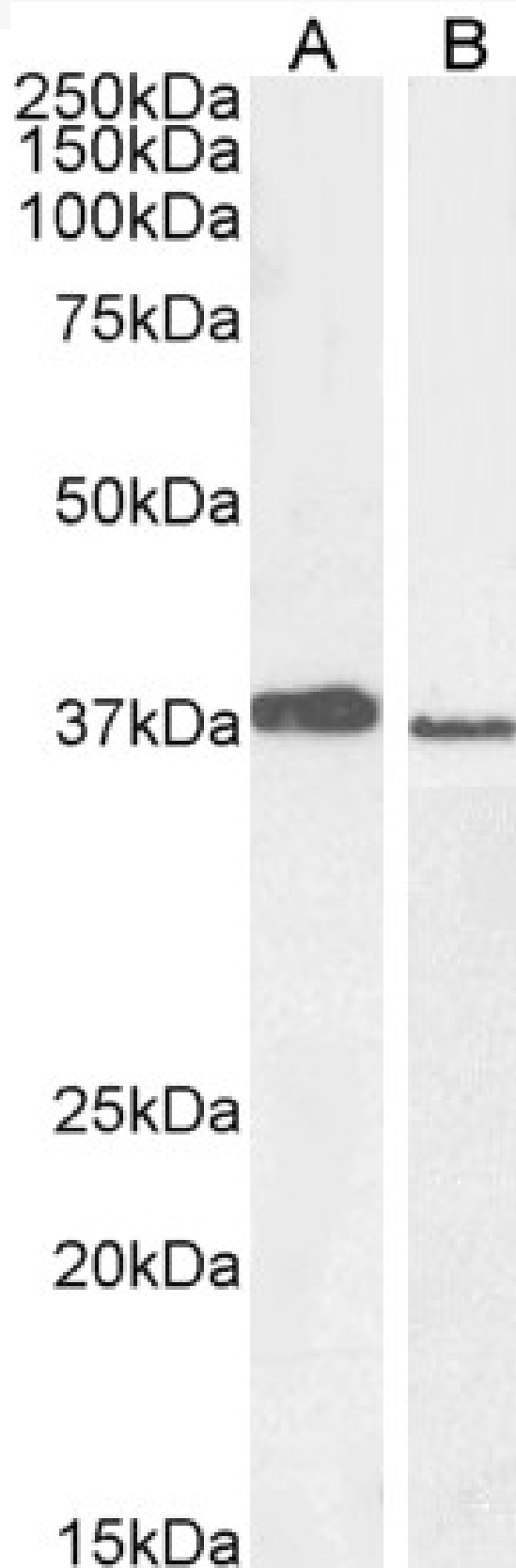


GOAT ANTI-MEL18 / PCGF2 ANTIBODY

SKU: EB05955



SPECIFICATIONS

Formulation	Supplied at 0.5 mg/ml in Tris saline, 0.02% sodium azide, pH7.3 with 0.5% bovine serum albumin.
Unit Size	100 µg
Storage Instructions	Aliquot and store at -20°C. Minimize freezing and thawing.
Synonym / Alias Names	MGC10545 zinc finger protein 144 ring finger protein 110 ZNF144 RNFI110 polycomb group ring finger 2 MEL-18 PCGF2
Accession ID	NP_009075.1
Blocking Peptide	EBP05955
Immunogen	Peptide with sequence C-KMTVNGAPVPPLT, from the C Terminus of the protein sequence according to NP_009075.1.
Peptide Sequence	C-KMTVNGAPVPPLT
Purification Method	Purified from goat serum by ammonium sulphate precipitation followed by antigen affinity chromatography using the immunizing peptide.
Shipping Instructions	Refrigerated
Predicted Species	Human, Dog, Cow
Reactive Species	Human
Human Gene ID	7703
Product Grade	https://prod-vector-labs-pimcore-assets.s3.us-east-1.amazonaws.com/assets/products/image/elite_medium.png
ELISA	
Detection Limit	Antibody detection limit dilution 1:16000.
Western Blot	Approx 37-38 kDa band observed in lysates of cell lines A549 and PD19 (calculated MW of 37.8kDa according to NP_009075.1). Recommended concentration: 0.3-1µg/ml. Primary incubation 1 hour at room temperature.
Application Type	Pep-ELISA, WB

DOCUMENTS

- [Data Sheet](#)

GALLERY IMAGES

