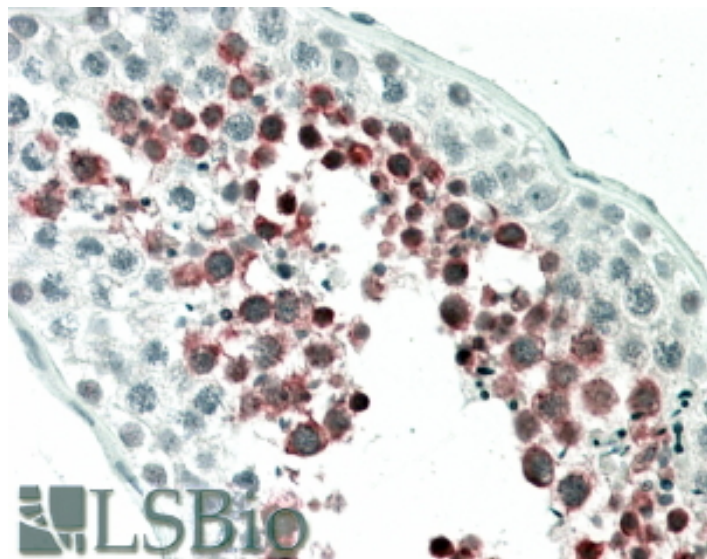


GOAT ANTI-MEPCE ANTIBODY

SKU: EB08073



SPECIFICATIONS

Formulation Supplied at 0.5 mg/ml in Tris saline, 0.02% sodium azide, pH7.3 with 0.5% bovine serum albumin.

Unit Size 100 µg

Storage Instructions Aliquot and store at -20°C. Minimize freezing and thawing.

Synonym / Alias Names bin3, bicoid-interacting 3, homolog|bin3, bicoid-interacting 3|FLJ20257|BCDIN3|methylphosphate capping enzyme|MEPCE

Accession ID NP_062552.2

Blocking Peptide EBP08073

Immunogen Peptide with sequence KQQRKFQYGN YCK, from the internal region of the protein sequence according to NP_062552.2.

Peptide Sequence KQQRKFQYGN YCK

Purification Method Purified from goat serum by ammonium sulphate precipitation followed by antigen affinity chromatography using the immunizing peptide.

Shipping Instructions Refrigerated

Predicted Species	Human, Mouse, Rat
Reactive Species	Human, Rat
Human Gene ID	56257
Product Grade	https://prod-vector-labs-pimcore-assets.s3.us-east-1.amazonaws.com/assets/products/image/elite_medium.png
IHC Results	In paraffin embedded Human Testis shows staining of the spermatids. Recommended concentration: 5-10µg/ml.
ELISA Detection Limit	Antibody detection limit dilution 1:2000.
Western Blot	Approx. 75kDa band observed in Rat Testis lysates (calculated MW of 74.4kDa according to Human NP_062552.2 and 75.3kDa according to Rat XP_222048.4). Recommended concentration: 1-3µg/ml. Primary incubation was 1 hour. Preliminary testing was unsuccessful on Human for this particular batch.
Application Type	Pep-ELISA, WB, IHC

DOCUMENTS

- [Data Sheet](#)

GALLERY IMAGES

