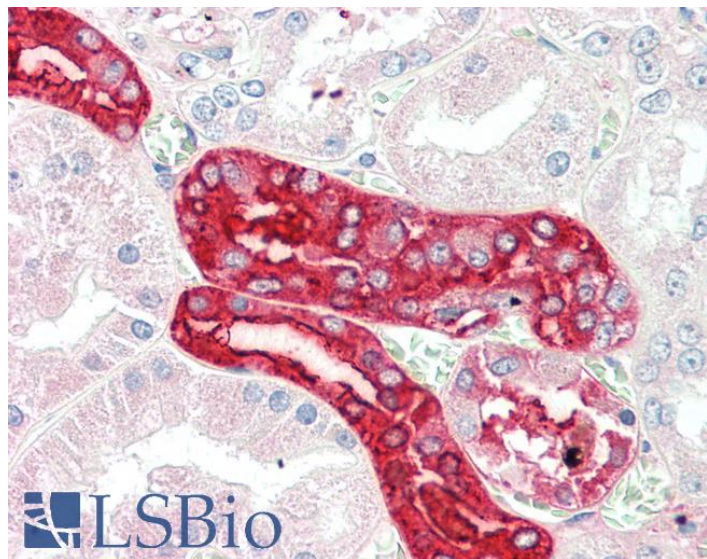


GOAT ANTI-MEX3C (AA541-554) ANTIBODY

SKU: EB11536



SPECIFICATIONS

Formulation Supplied at 0.5 mg/ml in Tris saline, 0.02% sodium azide, pH7.3 with 0.5% bovine serum albumin.

Unit Size 100 µg

Storage Instructions Aliquot and store at -20°C. Minimize freezing and thawing.

Synonym / Alias Names FLJ38871|mex-3 homolog C (C. elegans)|MEX3C|MEX-3C|OTTHUMP00000163545|ring finger and KH domain containing 2|RING finger and KH domain-containing protein 2|RING finger protein 194|RKHD2|RNA-binding protein MEX3C|RNF194

Accession ID NP_057710.3

Blocking Peptide EBP11536

Immunogen Peptide with sequence C-TPRLSPTFPESIEH, from the internal region of the protein sequence according to NP_057710.3.

Peptide Sequence C-TPRLSPTFPESIEH

Purification Method Purified from goat serum by ammonium sulphate precipitation followed by antigen affinity chromatography using the immunizing peptide.

Shipping Instructions Refrigerated

Predicted Species	Human, Mouse, Rat, Dog, Pig, Cow
Reactive Species	Human, Mouse
Human Gene ID	51320
Mouse Gene ID	240396
Rat Gene ID	307271
Product Grade	https://prod-vector-labs-pimcore-assets.s3.us-east-1.amazonaws.com/assets/products/image/elite_medium.png
IHC Results	Paraffin embedded Human Kidney. Recommended concentration: 5µg/ml.
ELISA	
Detection Limit	Antibody detection limit dilution 1:32000.
Western Blot	Approx 60+36kDa bands observed in Mouse Testis lysates, and these bands reduced after knock-down by gene trap (calculated MW of 69.4kDa according to NP_057710.3). Recommended concentration: 0.2-0.5µg/ml. Primary incubation was 1 hour.
Application Type	Pep-ELISA, WB, IHC

SELECTED REFERENCES

[{"pmid": 27053362, "intro": "**This antibody has been successfully used in Western blot on Human and Mouse:**", "title": "Oocyte-Specific Expression of Mouse MEX3C652AA in the Ovary and Its Potential Role in Regulating Maternal Fos mRNA.", "author": "Li X, Li Y, Liu C, Jin M, Lu B.", "journal": "Biol Reprod. 2016 Apr 6. pii: biolreprod.115.136630"}]

DOCUMENTS

- [Data Sheet](#)

GALLERY IMAGES

