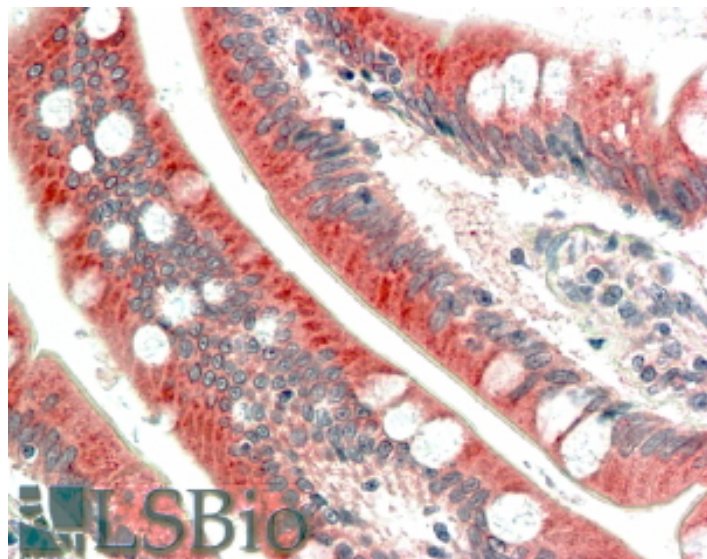


GOAT ANTI-MIC1 / C18ORF8 ANTIBODY

SKU: EB07790



SPECIFICATIONS

| | |
|------------------------------|---|
| Formulation | Supplied at 0.5 mg/ml in Tris saline, 0.02% sodium azide, pH7.3 with 0.5% bovine serum albumin. |
| Unit Size | 100 µg |
| Storage | Aliquot and store at -20°C. Minimize freezing and thawing. |
| Instructions | |
| Synonym / Alias | colon cancer-associated protein Mic1 colon cancer associated protein |
| Names | Mic1 MIC1 HsT2591 FLJ23453 chromosome 18 open reading frame 8 C18orf8 |
| Accession ID | NP_037458.3 |
| Blocking Peptide | EBP07790 |
| Immunogen | Peptide with sequence C-DKLNHEYKKYLDAEQ, from the internal region of the protein sequence according to NP_037458.3. |
| Peptide Sequence | C-DKLNHEYKKYLDAEQ |
| Purification Method | Purified from goat serum by ammonium sulphate precipitation followed by antigen affinity chromatography using the immunizing peptide. |
| Shipping Instructions | Refrigerated |

| | |
|------------------------------|---|
| Predicted Species | Human, Mouse, Rat, Dog |
| Reactive Species | Human |
| Human Gene ID | 29919 |
| Mouse Gene ID | 76482 |
| Rat Gene ID | 291784 |
| Product Grade | https://prod-vector-labs-pimcore-assets.s3.us-east-1.amazonaws.com/assets/products/image/elite_medium.png |
| IHC Results | In paraffin embedded Small Intestine shows textured cytoplasm staining in of the enterocytes. Recommended concentration, 5-10µg/ml. |
| ELISA Detection Limit | Antibody detection limit dilution 1:32000. |
| Western Blot | Approx 80kDa band observed in Human Breast lysates (calculated MW of 75.0kDa according to NP_037458.3). Recommended concentration: 1-3µg/ml. |
| Application Type | Pep-ELISA, WB, IHC |

DOCUMENTS

- [Data Sheet](#)

GALLERY IMAGES

