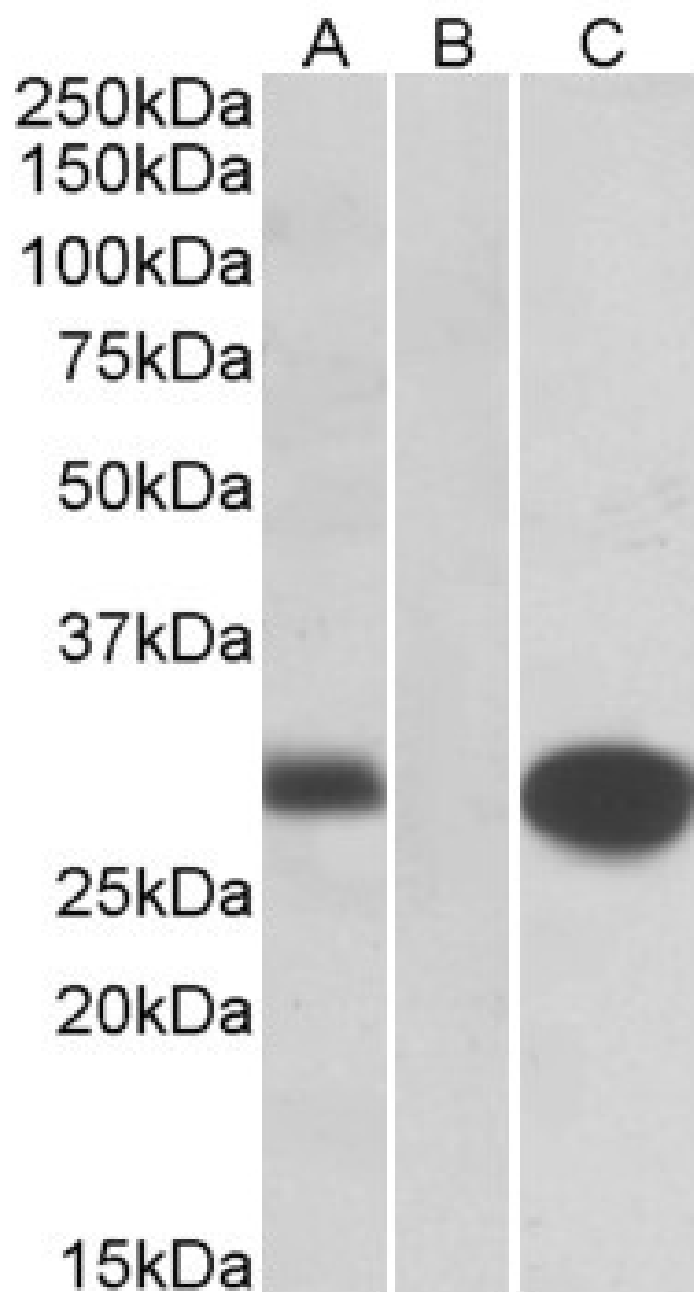


GOAT ANTI-MIG12 ANTIBODY

SKU: EB10281



SPECIFICATIONS

Formulation	Supplied at 0.5 mg/ml in Tris saline, 0.02% sodium azide, pH7.3 with 0.5% bovine serum albumin.
Unit Size	100 µg
Storage Instructions	Aliquot and store at -20°C. Minimize freezing and thawing.
Synonym / Alias	FLJ10386 G12-like MID1 interacting G12-like protein MID1 interacting protein 1 (gastrulation specific G12 homolog (zebrafish)) MID1 interacting protein 1 (gastrulation specific G12-like) MIG12 STRAIT11499 THRSPL MID1IP1
Names	
Usage Summary	Purchase the +ve control! The transfected lysate used to QC this product is available for sale. Please email sales@everestbiotech.com to request datasheet, pricing and delivery information.
Accession ID	NP_067065.1
Blocking Peptide	EBP10281
Immunogen	Peptide with sequence C-HTVLSKLTRK, from the internal region of the protein sequence according to NP_067065.1.
Product Comments	Reported variants represent identical protein: NP_001092261.1, NP_067065.1, NP_001092260.1
Peptide Sequence	C-HTVLSKLTRK
Purification Method	Purified from goat serum by ammonium sulphate precipitation followed by antigen affinity chromatography using the immunizing peptide.
Shipping Instructions	Refrigerated
Predicted Species	Human, Mouse, Rat, Dog, Cow
Reactive Species	Human
Human Gene ID	58526
Mouse Gene ID	68041
Rat Gene ID	404280
Product Grade	https://prod-vector-labs-pimcore-assets.s3.us-east-1.amazonaws.com/assets/products/image/elite_medium.png
ELISA Detection Limit	Antibody detection limit dilution 1:8000.
Western Blot	In transfected HEK293 transiently expressing full-length Human MID1IP1 (myc and DYKDDDDK tagged), a band of approx. 28kDa was observed. No bands were observed in mock-transfected HEK293 and the same band was observed using anti-myc tag antibody. Recommended concentration, 0.2-1µg/ml.
Application Type	Pep-ELISA, WB-Trf

DOCUMENTS

- [Data Sheet](#)

GALLERY IMAGES

