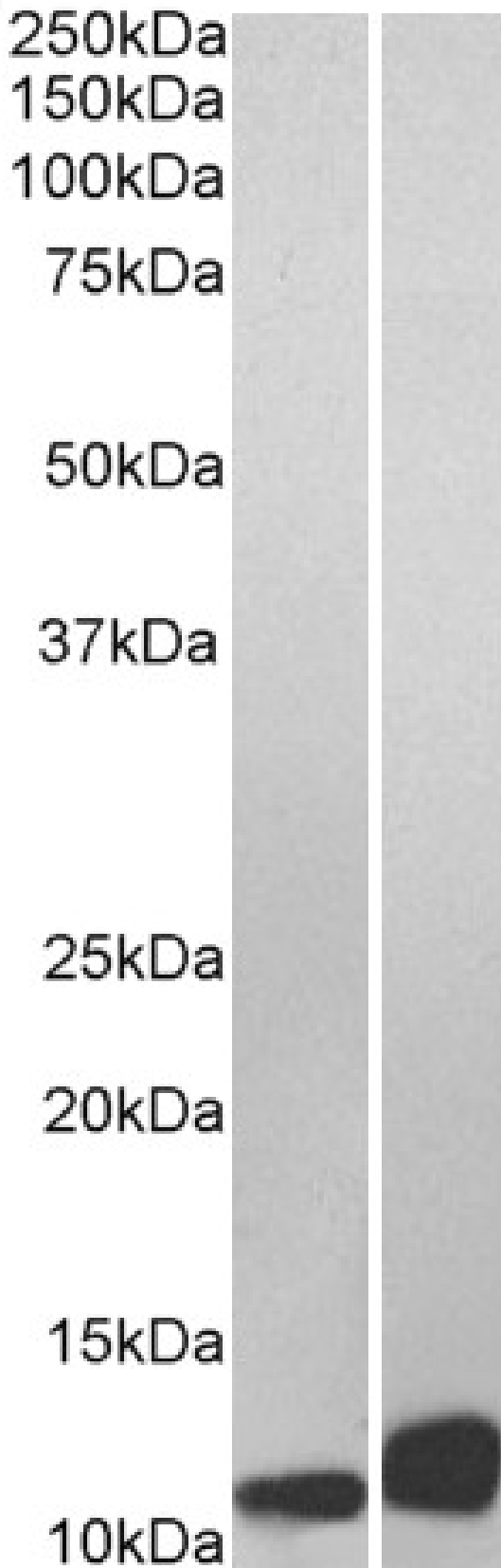


GOAT ANTI-MIF ANTIBODY

SKU: EB06765



SPECIFICATIONS

Formulation	Supplied at 0.5 mg/ml in Tris saline, 0.02% sodium azide, pH7.3 with 0.5% bovine serum albumin.
Unit Size	100 µg
Storage Instructions	Aliquot and store at -20°C. Minimize freezing and thawing.
Synonym / Alias Names	L-dopachrome tautomerase L-dopachrome isomerase phenylpyruvate tautomerase glycosylation-inhibiting factor MMIF GLIF GIF HGNC:7097 macrophage migration inhibitory factor (glycosylation-inhibiting factor) MIF
Accession ID	NP_002406.1
Blocking Peptide	EBP06765
Immunogen	Peptide with sequence C-NAANVGWNNSTFA, from the C Terminus of the protein sequence according to NP_002406.1.
Peptide Sequence	C-NAANVGWNNSTFA
Purification Method	Purified from goat serum by ammonium sulphate precipitation followed by antigen affinity chromatography using the immunizing peptide.
Shipping Instructions	Refrigerated
Predicted Species	Human, Rat, Mouse
Reactive Species	Human
Human Gene ID	4282
Product Grade	https://prod-vector-labs-pimcore-assets.s3.us-east-1.amazonaws.com/assets/products/image/elite_medium.png
IHC Results	Paraffin embedded Human Thymus. Recommended concentration: 5µg/ml.
ELISA Detection Limit	Antibody detection limit dilution 1:128000.
Western Blot	Approx 13kDa band observed in Human Lymph Node, and Thymus lysates and similar bands are observed in lysates of cell lines Daudi and Jurkat (calculated MW of 12.5kDa according to NP_002406.1). Recommended concentration: 0.01-0.03µg/ml. Primary incubation was 1 hour.
Application Type	Pep-ELISA, WB, IHC

GALLERY IMAGES

