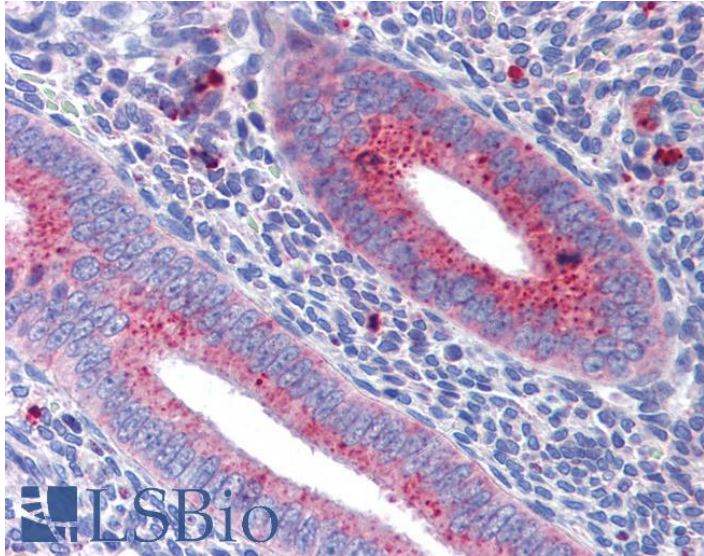


GOAT ANTI-MITOFUSIN 1 ANTIBODY

SKU: EB08139



SPECIFICATIONS

Formulation	Supplied at 0.5 mg/ml in Tris saline, 0.02% sodium azide, pH7.3 with 0.5% bovine serum albumin.
Unit Size	100 µg
Storage Instructions	Aliquot and store at -20°C. Minimize freezing and thawing.
Synonym / Alias Names	putative transmembrane GTPase mitochondrial transmembrane GTPase Fzo-1 mitochondrial transmembrane GTPase FZO-2 hfzo2 hfzo1 MGC41806 FLJ20693 DKFZp762F247 mitofusin 1 MFN1
Accession ID	NP_284941.2
Blocking Peptide	EBP08139
Immunogen	Peptide with sequence C-NKAVQLENELEN, from the internal region of the protein sequence according to NP_284941.2.
Peptide Sequence	C-NKAVQLENELEN
Purification Method	Purified from goat serum by ammonium sulphate precipitation followed by antigen affinity chromatography using the immunizing peptide.
Shipping Instructions	Refrigerated

Predicted Species	Human, Mouse, Rat
Reactive Species	Human
Human Gene ID	55669
Product Grade	https://prod-vector-labs-pimcore-assets.s3.us-east-1.amazonaws.com/assets/products/image/elite_medium.png
IHC Results	Paraffin embedded Human Uterus and Adrenal Gland. Recommended concentration: 3.75µg/ml.
ELISA Detection Limit	Antibody detection limit dilution 1:64000.
Application Type	Pep-ELISA, IHC

DOCUMENTS

- [Data Sheet](#)

GALLERY IMAGES

