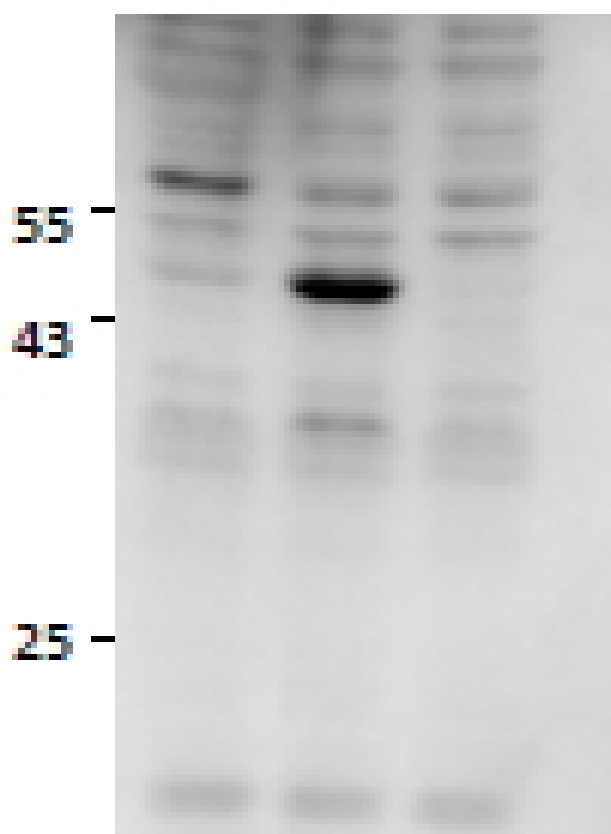


GOAT ANTI-MK2 / MAPKAPK2 ANTIBODY

SKU: EB11929

MK2/3 DKO+

WT MK2 GFP



SPECIFICATIONS

Formulation Supplied at 0.5 mg/ml in Tris saline, 0.02% sodium azide, pH7.3 with 0.5% bovine serum albumin.

Unit Size 100 µg

Storage Instructions	Aliquot and store at -20°C. Minimize freezing and thawing.
Synonym / Alias Names	MAPKAP kinase 2 MAPK-activated protein kinase 2 MAP kinase-activated protein kinase 2 MK2 MK-2 MAPKAP-K2 mitogen-activated protein kinase-activated protein kinase 2 MAPKAPK2
Usage Summary	Immunoprecipitation: MK2/MK3 double knockout MEFs retrovirally transduced with MK2 or empty vector were lysed from confluent plates and used for IP with 1.5ug EB11929 or EB11930. Western blots of the IP were labelled with rabbit anti-MK2 (CST). An approx 45kDa of MK2 is only precipitated from lysates of those KO MEFs that have been rescued by the MK2 expression construct as described in PMID: 19743408. Data obtained from Dr. M. B. Menon, Inst. Biochemistry, Hannover Medical School, Germany.
Accession ID	NP_004750.1; NP_116584.2
Blocking Peptide	EBP11929
Immunogen	Peptide with sequence C-SRVLKEDKERWED, from the internal region (near C Terminus) of the protein sequence according to NP_004750.1; NP_116584.2.
Product Comments	This antibody is expected to recognize both reported isoforms (NP_004750.1; NP_116584.2).
Peptide Sequence	C-SRVLKEDKERWED
Purification Method	Purified from goat serum by ammonium sulphate precipitation followed by antigen affinity chromatography using the immunizing peptide.
Shipping Instructions	Refrigerated
Predicted Species	Human, Mouse, Rat, Dog, Cow
Reactive Species	Human, Mouse
Human Gene ID	9261
Mouse Gene ID	17164
Rat Gene ID	289014
Product Grade	https://prod-vector-labs-pimcore-assets.s3.us-east-1.amazonaws.com/assets/products/image/elite_plus_medium.png
IHC Results	Paraffin embedded Human Heart. Recommended concentration: 5µg/ml.
ELISA Detection Limit	Antibody detection limit dilution 1:128000.
Western Blot	Approx 60kDa band observed in Mouse Embryonic Fibroblasts (MEF) lysates, not present in the knockout MEFs and reappearing as a 45kDa band upon reintroduction of MK2 gene expression through viral transduction (calculated MW of 44.0kDa according to Mouse NP_032577.1). The observed molecular weights correspond to earlier findings in literature with different antibodies (Menon et al, Cell Motil Cytoskeleton. 2009 Dec;66(12):1041-7. PMID: 19743408). There is no cross-reactivity to MK5. Data obtained from Dr. M. B. Menon, Inst. Biochemistry, Hannover Medical School, Germany. Recommended concentration: 0.5-2µg/ml.
Application Type	Pep-ELISA, WB, IP, IHC

DOCUMENTS

- [Data Sheet](#)

GALLERY IMAGES

