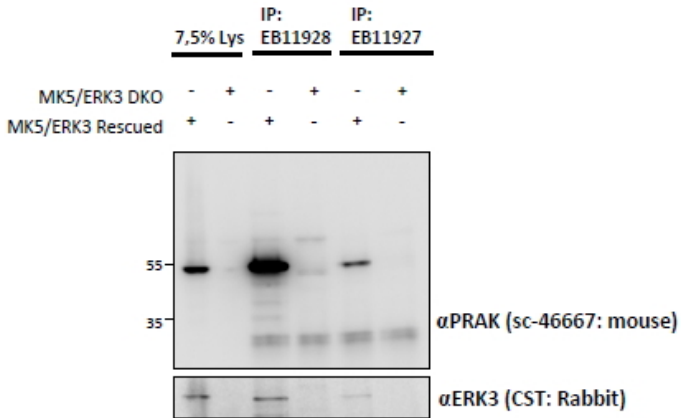


# GOAT ANTI-MK5 / MAPKAPK5 (AA192-206) ANTIBODY

SKU: EB11928



## SPECIFICATIONS

**Formulation** Supplied at 0.5 mg/ml in Tris saline, 0.02% sodium azide, pH7.3 with 0.5% bovine serum albumin.

**Unit Size** 100 µg

**Storage Instructions** Aliquot and store at -20°C. Minimize freezing and thawing.

**Synonym / Alias Names** p38-regulated/activated protein kinase|MAPKAPK-5|MAPKAP kinase 5|MAPK-activated protein kinase 5|MAP kinase-activated protein kinase 5|PRAK|MK5|MK-5|MAPKAP-K5|mitogen-activated protein kinase-activated protein kinase 5|MAPKAPK5

**Usage Summary** Immunoprecipitation: MK5/ERK3 double knockout Mouse Embryonic Fibroblasts (MEFs) retrovirally transduced with MK5/ERK3 or empty vector (GFP) were lysed from confluent plates and used for IP with 1.5µg EB11927 or EB11928. Western blots of the IP were labelled with mouse anti-MK5 (SC) or with rabbit anti-ERK3 serum (CST). An approx 55kDa of MK5 is only precipitated from lysates of those KO MEFs that have been rescued by the ERK3/MK5 expression construct as described in PMID: 22508986. Data obtained from Dr. M. B. Menon, Inst. Biochemistry, Hannover Medical School, Germany.

**Accession ID** NP\_003659.2; NP\_620777.1

**Blocking Peptide** EBP11928

**Immunogen** Peptide with sequence C-PQVLEAQRHHQKEKS, from the internal region of the protein sequence according to NP\_003659.2; NP\_620777.1.

**Peptide Sequence** C-PQVLEAQRHHQKEKS

**Purification Method** Purified from goat serum by ammonium sulphate precipitation followed by antigen affinity chromatography using the immunizing peptide.

<b>Shipping Instructions</b>	Refrigerated
<b>Predicted Species</b>	Human, Mouse, Rat, Dog, Pig, Cow
<b>Reactive Species</b>	Human, Mouse
<b>Human Gene ID</b>	8550
<b>Mouse Gene ID</b>	17165
<b>Rat Gene ID</b>	498183
<b>Product Grade</b>	<a href="https://prod-vector-labs-pimcore-assets.s3.us-east-1.amazonaws.com/assets/products/image/elite_plus_medium.png">https://prod-vector-labs-pimcore-assets.s3.us-east-1.amazonaws.com/assets/products/image/elite_plus_medium.png</a>
<b>IHC Results</b>	In paraffin embedded Human Kidney shows nuclear staining in the DCT. Recommended concentration, 4-8µg/ml.
<b>ELISA Detection Limit</b>	Antibody detection limit dilution 1:64000.
<b>Western Blot</b>	In transfected HEK293 transiently expressing either Mouse MK5 fused to GFP or the similar Mouse MK2 fused to GFP, only the expected band was observed in the MK5 lane after EB11928 labeling. Data obtained from Dr. M. B. Menon, Inst. Biochemistry, Hannover Medical School, Germany. Recommended concentration, 0.5-1µg/ml.
<b>Application Type</b>	Pep-ELISA, WB-Trf, IP, IHC

## DOCUMENTS

- [Data Sheet](#)

## GALLERY IMAGES

