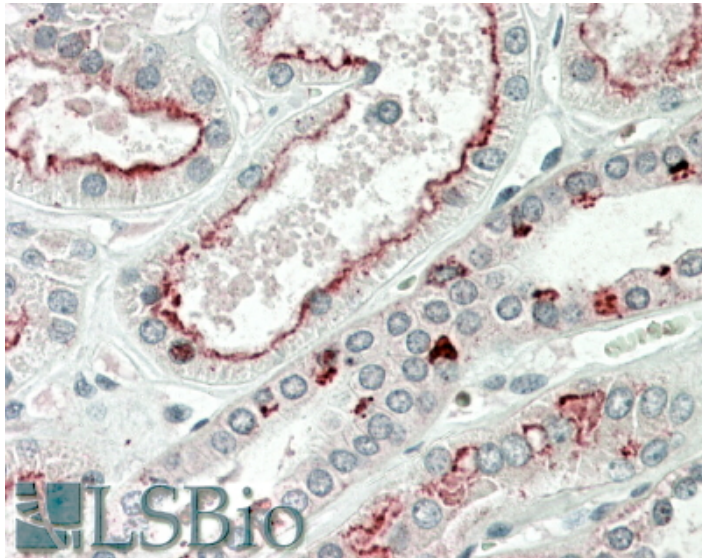




GOAT ANTI-MK5 / MAPKAPK5 ANTIBODY

SKU: EB11927



SPECIFICATIONS

Formulation	Supplied at 0.5 mg/ml in Tris saline, 0.02% sodium azide, pH7.3 with 0.5% bovine serum albumin.
Unit Size	100 µg
Storage Instructions	Aliquot and store at -20°C. Minimize freezing and thawing.
Synonym / Alias Names	p38-regulated/activated protein kinase MAPKAPK-5 MAPKAP kinase 5 MAPK-activated protein kinase 5 MAP kinase-activated protein kinase 5 PRAK MK5 MK-5 MAPKAP-K5 mitogen-activated protein kinase-activated protein kinase 5 MAPKAPK5
Usage Summary	<p>Immunoprecipitation: MK5/ERK3 double knockout Mouse Embryonic Fibroblasts (MEFs) retrovirally transduced with Mk5/Erk3 or empty vector (GFP) were lysed from confluent plates and used for IP with 1.5ug EB11927 or EB11928. Western blots of the IP were labelled with mouse anti-MK5 (SC) or with rabbit anti-ERK3 serum (CST). An approx 55kDa of MK5 is only precipitated from lysates of those KO MEFs that have been rescued by the ERK3/MK5 expression constructs described in PMID: 22508986. Data obtained from Dr. M. B. Menon, Inst. Biochemistry, Hannover Medical School, Germany.</p>
Accession ID	NP_003659.2; NP_620777.1
Blocking Peptide	EBP11927
Immunogen	Peptide with sequence C-STEALDNVLPASQ, from the internal region of the protein sequence according to NP_003659.2; NP_620777.1.



Peptide Sequence	C-STEALDNLVPSAQ
Purification Method	Purified from goat serum by ammonium sulphate precipitation followed by antigen affinity chromatography using the immunizing peptide.
Shipping Instructions	Refrigerated
Predicted Species	Human, Mouse, Rat, Dog, Pig, Cow
Reactive Species	Human, Mouse
Human Gene ID	8550
Mouse Gene ID	17165
Rat Gene ID	498183
Product Grade	https://prod-vector-labs-pimcore-assets.s3.us-east-1.amazonaws.com/assets/products/image/elite_plus_medium.png
IHC Results	In paraffin embedded Human Kidney shows brushborder staining in the PCT. Recommended concentration, 4-8µg/ml.
ELISA Detection Limit	Antibody detection limit dilution 1:32000.
Western Blot	In transfected HEK293 transiently expressing either Mouse MK5 fused to GFP or the similar Mouse MK2 fused to GFP; only the expected band was observed in the MK5 lane after EB11927 labeling. Data obtained from Dr. M. B. Menon, Inst. Biochemistry, Hannover Medical School, Germany. Recommended concentration, 0.5-1µg/ml.
Application Type	Pep-ELISA, WB-Trf, IP, IHC

DOCUMENTS

- [Data Sheet](#)

GALLERY IMAGES

