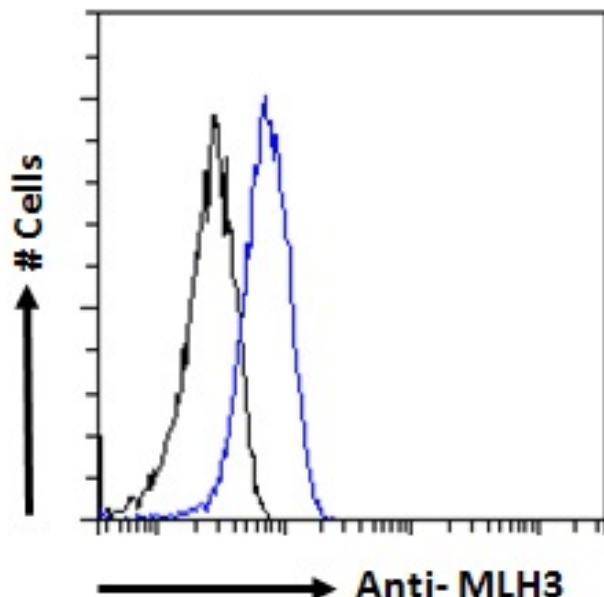


# GOAT ANTI-MLH3 ANTIBODY

SKU: EB05530



## SPECIFICATIONS

**Formulation** Supplied at 0.5 mg/ml in Tris saline, 0.02% sodium azide, pH7.3 with 0.5% bovine serum albumin.

**Unit Size** 100 µg

**Storage Instructions** Aliquot and store at -20°C. Minimize freezing and thawing.

**Synonym / Alias Names** mutL homolog 3|DNA mismatch repair protein MLH3|mismatch repair gene MLH3|mutL (E. coli) homolog 3|S240II117|MGC138372|HNPCC7|HNPCC|mutL homolog 3 (E. coli)|MLH3

**Usage Summary** **Immunofluorescence:** Strong expression of the protein seen in the nuclei of HeLa cells. Recommended concentration: 10µg/ml. **Flow Cytometry:** Flow cytometric analysis of HeLa cells. Recommended concentration: 10ug/ml.

**Accession ID** NP\_001035197.1; NP\_055196.2

**Blocking Peptide** EBP05530

**Immunogen** Peptide with sequence RQSLQQSMPPCEPP, from the C Terminus of the protein sequence according to NP\_001035197.1; NP\_055196.2.

|                              |   |
|------------------------------|---|
| <b>Product Comments</b>      | This antibody is expected to recognize isoform 1 (NP_001035197.1) and isoform 2 (NP_055196.2).  |
| <b>Peptide Sequence</b>      | RQSLQQSMPPCEPP  |
| <b>Purification Method</b>   | Purified from goat serum by ammonium sulphate precipitation followed by antigen affinity chromatography using the immunizing peptide.   |
| <b>Shipping Instructions</b> | Refrigerated  |
| <b>Predicted Species</b>     | Human   |
| <b>Reactive Species</b>      | Human   |
| <b>Human Gene ID</b>         | 27030   |
| <b>Product Grade</b>         | <a href="https://prod-vector-labs-pimcore-assets.s3.us-east-1.amazonaws.com/assets/products/image/elite_medium.png">https://prod-vector-labs-pimcore-assets.s3.us-east-1.amazonaws.com/assets/products/image/elite_medium.png</a> |
| <b>ELISA Detection Limit</b> | Antibody detection limit dilution 1:2000.   |
| <b>Application Type</b>      | Pep-ELISA, IF, FC   |

## DOCUMENTS

- [Data Sheet](#)

## GALLERY IMAGES

