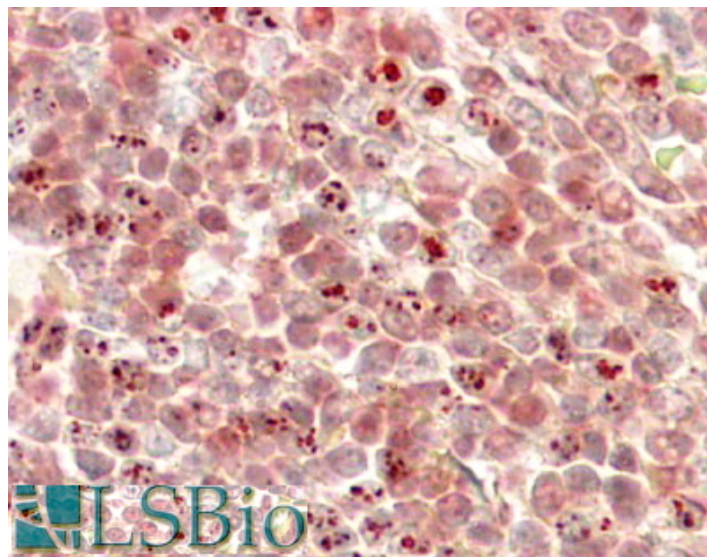


GOAT ANTI-KMT2D/MLL2 ANTIBODY

SKU: EB05728



SPECIFICATIONS

Formulation Supplied at 0.5 mg/ml in Tris saline, 0.02% sodium azide, pH7.3 with 0.5% bovine serum albumin.

Unit Size 100 µg

Storage Instructions Aliquot and store at -20°C. Minimize freezing and thawing.

Synonym / Alias Names MLL2|myeloid/lymphoid or mixed-lineage leukemia 2|ALR|ALL1-related gene|AAD10|CAGL114|KMT2D|MLL4|TNRC21|ALL1-related|trinucleotide repeat containing 21|KMS|KABUK1|Lysine methyltransferase 2D|Methyl transferase 2D

Accession ID NP_003473.3

Blocking Peptide EBP05728

Immunogen Peptide with sequence DSQNLAGEDKDSQ-C, from the N Terminus of the protein sequence according to NP_003473.3.

Product Comments The immunizing peptide was designed from NP_003473.1. Since then the sequence has changed in the databases and currently differs at two locations in NP_003473.3.

Peptide Sequence DSQNLAGEDKDSQ-C

Purification Method Purified from goat serum by ammonium sulphate precipitation followed by antigen affinity chromatography using the immunizing peptide.

Shipping Instructions	Refrigerated
Predicted Species	Human
Reactive Species	Human
Human Gene ID	8085
Product Grade	https://prod-vector-labs-pimcore-assets.s3.us-east-1.amazonaws.com/assets/products/image/elite_medium.png
IHC Results	In paraffin embedded Human Placenta shows nuclear staining in the trophoblasts . Similar nuclear patches are observed in Human Liver. Recommended concentration: 4-8µg/ml.
ELISA	
Detection Limit	Antibody detection limit dilution 1:16000.
Western Blot	Using our routine western blotting protocol we would not expect to reliably detect proteins larger than 250kDa (calculated MW of approx. 593KDa according to NP_003473.3).
Application Type	Pep-ELISA, IHC

DOCUMENTS

- [Data Sheet](#)

GALLERY IMAGES

