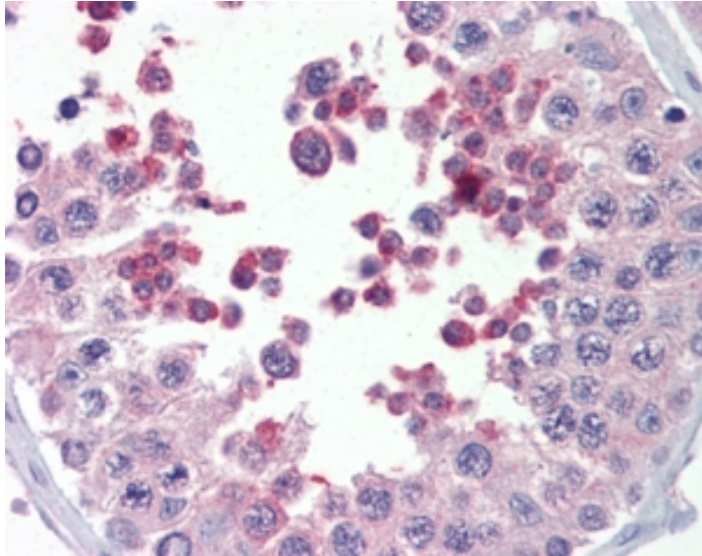




# GOAT ANTI-KMT2B/MLL4 ANTIBODY

**SKU:** EB05729



## SPECIFICATIONS

<b>Formulation</b>	Supplied at 0.5 mg/ml in Tris saline, 0.02% sodium azide, pH7.3 with 0.5% bovine serum albumin.
<b>Unit Size</b>	100 µg
<b>Storage Instructions</b>	Aliquot and store at -20°C. Minimize freezing and thawing.
<b>Synonym / Alias Names</b>	WBP-7 WBP-7 mixed lineage leukemia 4 Lysine N-methyltransferase 2B KIAA0304 histone-lysine N-methyltransferase 2B CXXC10 myeloid/lymphoid or mixed-lineage leukemia 4 MLL1B DYT28 WBP7 MLL2 HRX2 MLL4 KMT2B
<b>Accession ID</b>	NP_055542.1
<b>Blocking Peptide</b>	EBP05729
<b>Immunogen</b>	Peptide with sequence CNCGAKRCRRFLN, from the C Terminus of the protein sequence according to NP_055542.1.
<b>Peptide Sequence</b>	CNCGAKRCRRFLN
<b>Purification Method</b>	Purified from goat serum by ammonium sulphate precipitation followed by antigen affinity chromatography using the immunizing peptide.
<b>Shipping Instructions</b>	Refrigerated



<b>Predicted Species</b>	Human, Mouse, Rat, Dog, Pig
<b>Reactive Species</b>	Human
<b>Human Gene ID</b>	9757
<b>Mouse Gene ID</b>	75410
<b>Product Grade</b>	<a href="https://prod-vector-labs-pimcore-assets.s3.us-east-1.amazonaws.com/assets/products/image/elite_medium.png">https://prod-vector-labs-pimcore-assets.s3.us-east-1.amazonaws.com/assets/products/image/elite_medium.png</a>
<b>IHC Results</b>	Positive staining seen in paraffin embedded Human Testis and Human Brain Cortex. Recommended concentration: 5-10µg/ml.
<b>ELISA</b>	
<b>Detection Limit</b>	Antibody detection limit dilution 1:128000.
<b>Western Blot</b>	Using our routine western blotting protocol we would not expect to reliably detect proteins larger than 250kDa (calculated MWt. of approx. 294KDa according to NP_055542.1).
<b>Application Type</b>	Pep-ELISA, IHC

## DOCUMENTS

- [Data Sheet](#)

## GALLERY IMAGES

