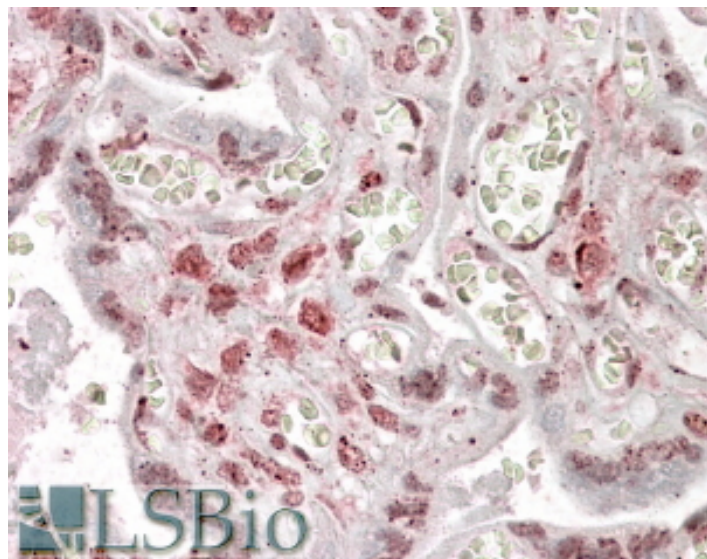


# GOAT ANTI-MLX ANTIBODY

**SKU:** EB09756



## SPECIFICATIONS

|                              |  |
|------------------------------|--|
| <b>Formulation</b>           | Supplied at 0.5 mg/ml in Tris saline, 0.02% sodium azide, pH7.3 with 0.5% bovine serum albumin.  |
| <b>Unit Size</b>             | 100 µg   |
| <b>Storage Instructions</b>  | Aliquot and store at -20°C. Minimize freezing and thawing.   |
| <b>Synonym / Alias Names</b> | transcription factor-like protein 4 transcription factor-like 4 MAX-like bHLHZIP protein BigMax protein bHLHd13 TCFL4 MXD7 MAD7 MAX-like protein X MLX |
| <b>Accession ID</b>          | NP_937848.1; NP_937847.1; NP_733752.1  |
| <b>Blocking Peptide</b>      | EBP09756   |
| <b>Immunogen</b>             | Peptide with sequence C-QIVKAHQDNPHEGED, from the internal region of the protein sequence according to NP_937848.1; NP_937847.1; NP_733752.1.          |
| <b>Product Comments</b>      | This antibody is expected to recognize all three reported isoforms (NP_937848.1; NP_937847.1; NP_733752.1).  |
| <b>Peptide Sequence</b>      | C-QIVKAHQDNPHEGED  |
| <b>Purification Method</b>   | Purified from goat serum by ammonium sulphate precipitation followed by antigen affinity chromatography using the immunizing peptide.                  |

|                              |   |
|------------------------------|---|
| <b>Shipping Instructions</b> | Refrigerated  |
| <b>Predicted Species</b>     | Human, Mouse, Rat, Dog, Cow   |
| <b>Reactive Species</b>      | Human   |
| <b>Human Gene ID</b>         | 6945  |
| <b>Mouse Gene ID</b>         | 21428   |
| <b>Rat Gene ID</b>           | 360631  |
| <b>Product Grade</b>         | <a href="https://prod-vector-labs-pimcore-assets.s3.us-east-1.amazonaws.com/assets/products/image/elite_medium.png">https://prod-vector-labs-pimcore-assets.s3.us-east-1.amazonaws.com/assets/products/image/elite_medium.png</a> |
| <b>IHC Results</b>           | In paraffin embedded Human Placenta shows nuclear staining of trophoblasts. Recommended concentration: 2.5-3.8µg/ml.  |
| <b>ELISA</b>                 |   |
| <b>Detection Limit</b>       | Antibody detection limit dilution 1:128000.   |
| <b>Western Blot</b>          | Preliminary experiments in Human, Mouse and Rat Liver lysates gave no specific signal but low background (at antibody concentration up to 1µg/ml).  |
| <b>Application Type</b>      | Pep-ELISA, IHC  |

## DOCUMENTS

- [Data Sheet](#)

## GALLERY IMAGES

