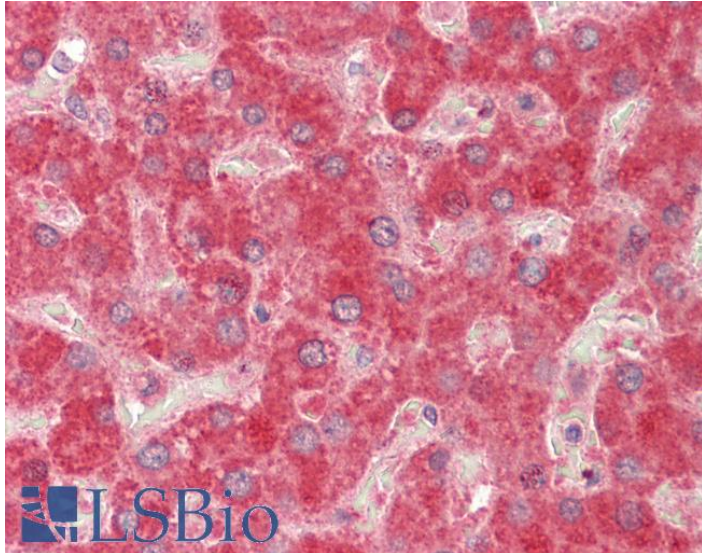




# GOAT ANTI-MMP14 ANTIBODY

**SKU:** EB11973



## SPECIFICATIONS

**Formulation** Supplied at 0.5 mg/ml in Tris saline, 0.02% sodium azide, pH7.3 with 0.5% bovine serum albumin.

**Unit Size** 100 µg

**Storage Instructions** Aliquot and store at -20°C. Minimize freezing and thawing.

**Synonym / Alias Names** membrane-type-1 matrix metalloproteinase|membrane-type matrix metalloproteinase 1|membrane type 1 metalloprotease|matrix metalloproteinase-14|matrix metalloproteinase 14 (membrane-inserted)|MTMMP1|MT1MMP|MT1-MMP|MT-MMP 1|MT-MMP|MMP-X1|MMP-14|1|matrix metalloproteinase 14 (membrane-inserted)|MMP14

**Accession ID** NP\_004986.1

**Blocking Peptide** EBP11973

**Immunogen** Peptide with sequence C-ESATPLRFREVP, from the internal region of the protein sequence according to NP\_004986.1.

**Peptide Sequence** C-ESATPLRFREVP

**Purification Method** Purified from goat serum by ammonium sulphate precipitation followed by antigen affinity chromatography using the immunizing peptide.



<b>Shipping Instructions</b>	Refrigerated
<b>Predicted Species</b>	Human, Mouse, Rat, Dog, Pig, Cow
<b>Reactive Species</b>	Human, Mouse
<b>Human Gene ID</b>	4323
<b>Mouse Gene ID</b>	17387
<b>Rat Gene ID</b>	81707
<b>Product Grade</b>	<a href="https://prod-vector-labs-pimcore-assets.s3.us-east-1.amazonaws.com/assets/products/image/elite_medium.png">https://prod-vector-labs-pimcore-assets.s3.us-east-1.amazonaws.com/assets/products/image/elite_medium.png</a>
<b>IHC Results</b>	Paraffin embedded Human Liver. Recommended concentration: 5µg/ml.
<b>ELISA</b>	
<b>Detection Limit</b>	Antibody detection limit dilution 1:128000.
<b>Western Blot</b>	Approx 60kDa band observed in lysates of cell lines NIH3T3, A549 and HeLa (calculated MW of 65.9kDa according to NP_004986.1). Recommended concentration: 1-3µg/ml. Primary incubation was 1 hour.
<b>Application Type</b>	Pep-ELISA, WB, IHC

## DOCUMENTS

- [Data Sheet](#)

## GALLERY IMAGES

