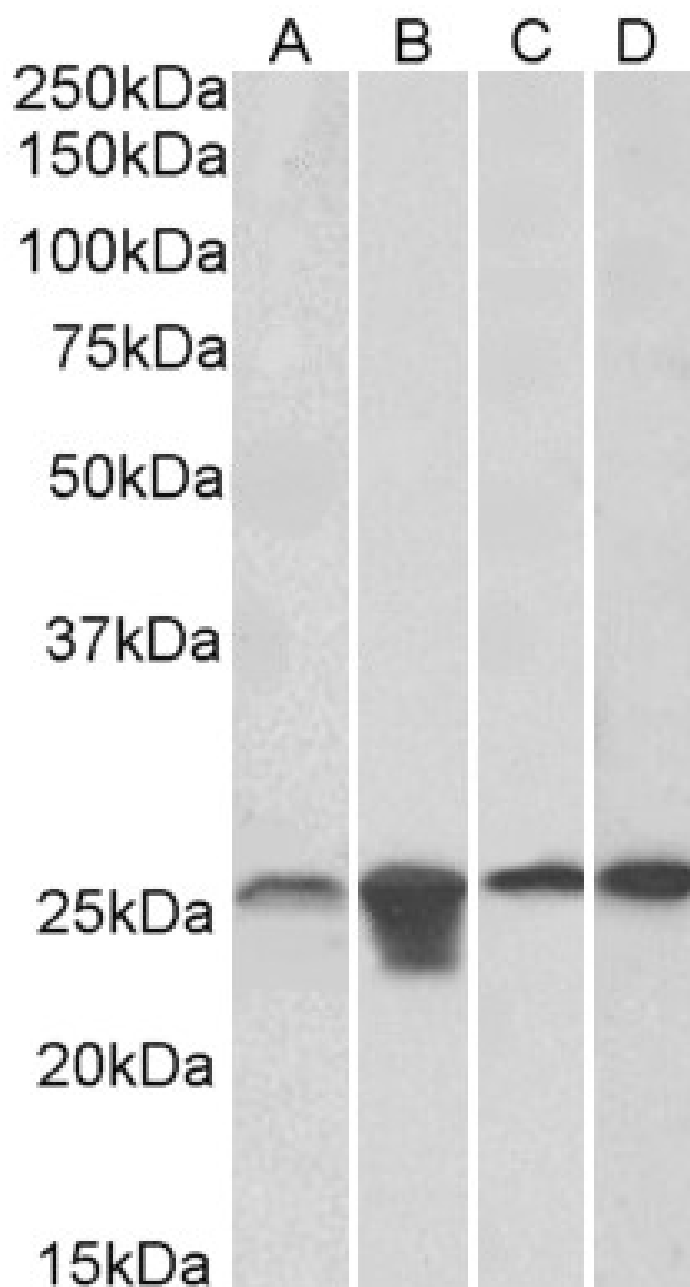


GOAT ANTI-MNSOD (AA119-130) ANTIBODY

SKU: EB10972



SPECIFICATIONS

Formulation	Supplied at 0.5 mg/ml in Tris saline, 0.02% sodium azide, pH7.3 with 0.5% bovine serum albumin.
Unit Size	100 µg
Storage Instructions	Aliquot and store at -20°C. Minimize freezing and thawing.
Synonym / Alias Names	superoxide dismutase [Mn], mitochondrial manganese-containing superoxide dismutase indophenoloxidase B Mn superoxide dismutase MVCD6 MNSOD IPOB RP1-56L9.2 superoxide dismutase 2, mitochondrial SOD2
Accession ID	NP_000627.2; NP_001019637.1
Blocking Peptide	EBP10972
Immunogen	Peptide with sequence C-EAIKRDFGSFDK, from the internal region of the protein sequence according to NP_000627.2; NP_001019637.1.
Product Comments	NB: The immunizing peptide represents the acetylation site including K122 according to isoform A. This antibody is expected to recognize both reported isoforms (NP_000627.2; NP_001019637.1) . Reported variants represent identical protein: NP_000627.2; NP_001019637.1.
Peptide Sequence	C-EAIKRDFGSFDK
Purification Method	Purified from goat serum by ammonium sulphate precipitation followed by antigen affinity chromatography using the immunizing peptide.
Shipping Instructions	Refrigerated
Predicted Species	Human, Mouse, Rat, Dog, Pig, Cow, Zebrafish
Reactive Species	Human, Mouse, Rat, Pig
Human Gene ID	6648
Mouse Gene ID	20656
Rat Gene ID	24787
Product Grade	https://prod-vector-labs-pimcore-assets.s3.us-east-1.amazonaws.com/assets/products/image/elite_medium.png
IHC Results	Paraffin embedded Human Skeletal Muscle. Recommended concentration: 5µg/ml.
ELISA Detection Limit	Antibody detection limit dilution 1:64000.
Western Blot	Approx 24kDa band observed in Human Brain (cerebellum) lysates and in Mouse and Rat Brain and Spinal Cord lysates, while approx 26kDa band was observed in lysates of cell lines HeLa, HepG2, HEK293 and NIH3T3 (calculated MW of 24.8kDa according to Human NP_000627.2, and 24.6kDa according to Mouse NP_038699.2). Recommended concentration: 0.01-0.1µg/ml. Primary incubation was 1 hour.
Application Type	Pep-ELISA, WB, IHC

DOCUMENTS

- [Data Sheet](#)

GALLERY IMAGES

