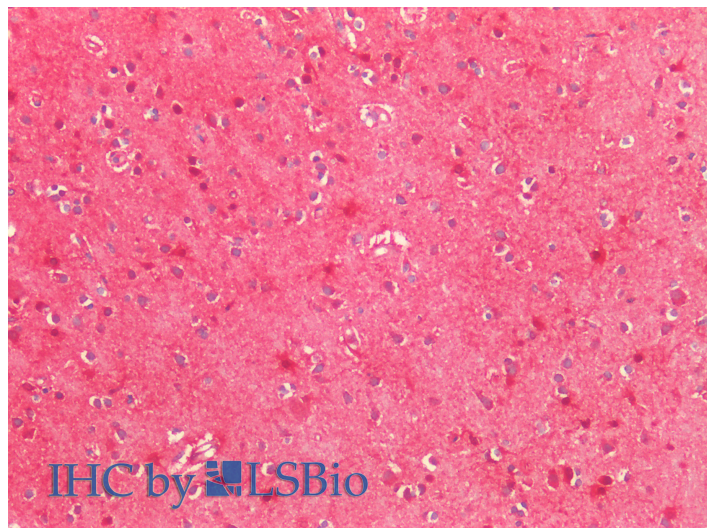


GOAT ANTI-MNSOD (ISOFORM A) ANTIBODY

SKU: EB10971



SPECIFICATIONS

Formulation	Supplied at 0.5 mg/ml in Tris saline, 0.02% sodium azide, pH7.3 with 0.5% bovine serum albumin.
Unit Size	100 µg
Storage Instructions	Aliquot and store at -20°C. Minimize freezing and thawing.
Synonym / Alias Names	superoxide dismutase [Mn], mitochondrial manganese-containing superoxide dismutase indophenoloxidase B Mn superoxide dismutase MVCD6 MNSOD IPOB RP1-56L9.2 superoxide dismutase 2, mitochondrial SOD2
Accession ID	NP_000627.2
Blocking Peptide	EBP10971
Immunogen	Peptide with sequence C-DVTAQIALQPALKFN, from the internal region of the protein sequence according to NP_000627.2.
Product Comments	This antibody is expected to recognize isoform A (NP_000627.2) only. Reported variants represent identical protein: NP_000627.2; NP_001019636.1.
Peptide Sequence	C-DVTAQIALQPALKFN
Purification Method	Purified from goat serum by ammonium sulphate precipitation followed by antigen affinity chromatography using the immunizing peptide.

Shipping Instructions	Refrigerated
Predicted Species	Human, Pig, Cow
Reactive Species	Human
Human Gene ID	6648
Product Grade	https://prod-vector-labs-pimcore-assets.s3.us-east-1.amazonaws.com/assets/products/image/elite_medium.png
IHC Results	Paraffin embedded Human Cortex. Recommended concentration: 5µg/ml.
ELISA	
Detection Limit	Antibody detection limit dilution 1:32000.
Western Blot	Approx 23kDa band observed in Human Brain (Cerebellum, Cerebral Cortex) and HeLa lysates (calculated MW of 24.8kDa according to NP_000627.2). Recommended concentration: 0.01-0.03µg/ml. Primary incubation was 1 hour.
Application Type	Pep-ELISA, WB, IHC

DOCUMENTS

- [Data Sheet](#)

GALLERY IMAGES

