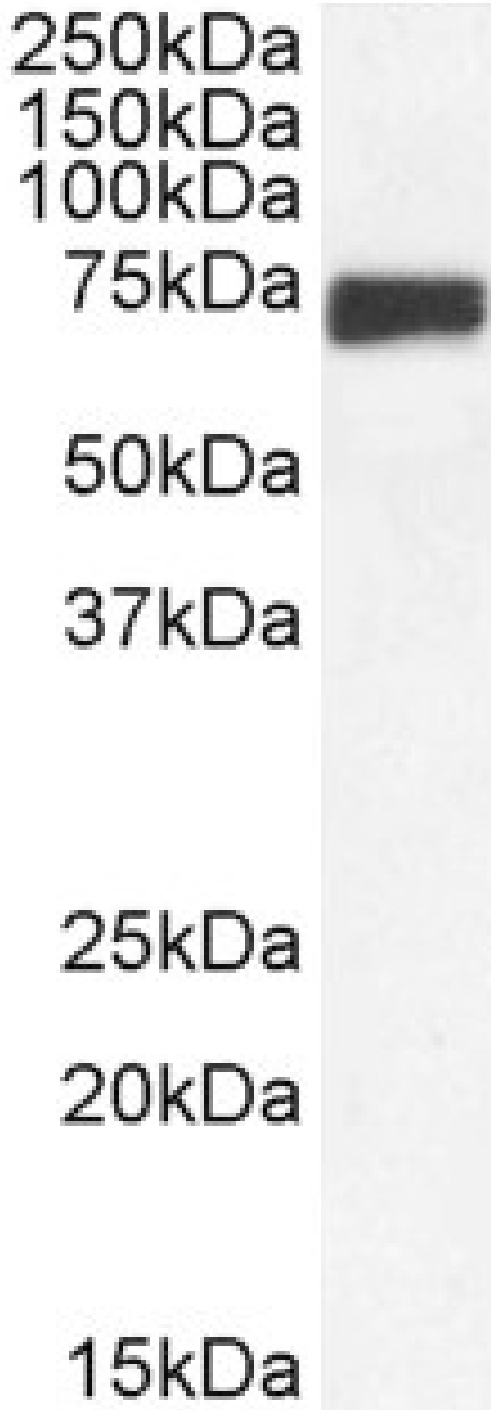


# GOAT ANTI-ROX / MNT ANTIBODY

**SKU:** EB09651



## SPECIFICATIONS

<b>Formulation</b>	Supplied at 0.5 mg/ml in Tris saline, 0.02% sodium azide, pH7.3 with 0.5% bovine serum albumin.
<b>Unit Size</b>	100 µg
<b>Storage</b>	Aliquot and store at -20°C. Minimize freezing and thawing.
<b>Instructions</b>	
<b>Synonym /</b>	
<b>Alias</b>	myc antagonist Max-interacting protein bHLHd3 ROX MXD6 MAD6 MAX binding protein MNT
<b>Names</b>	
<b>Accession ID</b>	NP_064706.1
<b>Blocking Peptide</b>	EBP09651
<b>Immunogen</b>	Peptide with sequence C-DQASTSTASEGEDNI, from the internal region of the protein sequence according to NP_064706.1.
<b>Peptide Sequence</b>	C-DQASTSTASEGEDNI
<b>Purification Method</b>	Purified from goat serum by ammonium sulphate precipitation followed by antigen affinity chromatography using the immunizing peptide.
<b>Shipping Instructions</b>	Refrigerated
<b>Predicted Species</b>	Human, Mouse, Rat, Dog
<b>Reactive Species</b>	Mouse
<b>Human Gene ID</b>	4335
<b>Mouse Gene ID</b>	17428
<b>Rat Gene ID</b>	287521
<b>Product Grade</b>	<a href="https://prod-vector-labs-pimcore-assets.s3.us-east-1.amazonaws.com/assets/products/image/elite_medium.png">https://prod-vector-labs-pimcore-assets.s3.us-east-1.amazonaws.com/assets/products/image/elite_medium.png</a>
<b>ELISA</b>	
<b>Detection Limit</b>	Antibody detection limit dilution 1:4000.
<b>Western Blot</b>	Approx 70-75kDa band observed in Mouse Brain lysates (calculated MW of 63.3kDa according to NP_034943.3). This molecular weight is routinely observed by other sources. Recommended concentration: 0.3-1µg/ml. Primary incubation 1 hour at room temperature.
<b>Application Type</b>	Pep-ELISA, WB

## DOCUMENTS

- [Data Sheet](#)

## GALLERY IMAGES

