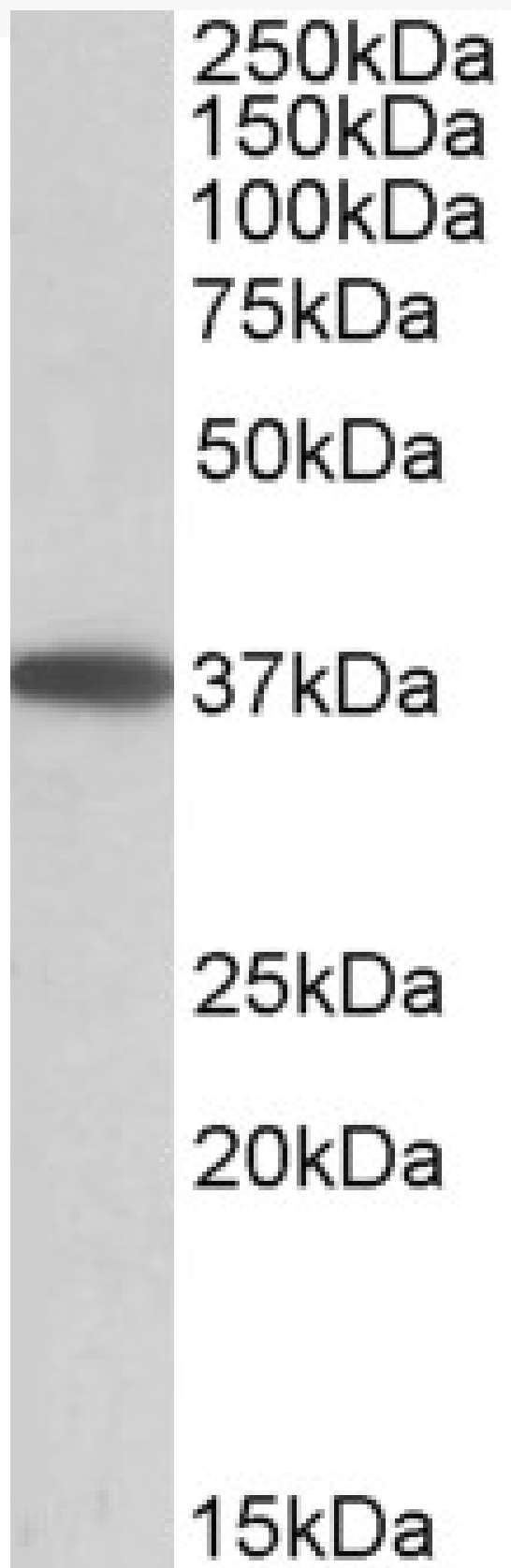


# GOAT ANTI-MOGAT2 ANTIBODY

**SKU:** EB10288



## SPECIFICATIONS

<b>Formulation</b>	Supplied at 0.5 mg/ml in Tris saline, 0.02% sodium azide, pH7.3 with 0.5% bovine serum albumin.
<b>Unit Size</b>	100 µg
<b>Storage Instructions</b>	Aliquot and store at -20°C. Minimize freezing and thawing.
<b>Synonym / Alias Names</b>	MOGAT2 monoacylglycerol O-acyltransferase 2 MGC119185 MGC119184 MGC119183 MGAT2 FLJ22644 DGAT2L5 acyl CoA:monoacylglycerol acyltransferase 2
<b>Accession ID</b>	NP_079374.2
<b>Blocking Peptide</b>	EBP10288
<b>Immunogen</b>	Peptide with sequence C-KESAAHILNRK, from the internal region of the protein sequence according to NP_079374.2.
<b>Peptide Sequence</b>	C-KESAAHILNRK
<b>Purification Method</b>	Purified from goat serum by ammonium sulphate precipitation followed by antigen affinity chromatography using the immunizing peptide.
<b>Shipping Instructions</b>	Refrigerated
<b>Predicted Species</b>	Human, Dog, Cow, Pig
<b>Reactive Species</b>	Human
<b>Human Gene ID</b>	80168
<b>Product Grade</b>	<a href="https://prod-vector-labs-pimcore-assets.s3.us-east-1.amazonaws.com/assets/products/image/elite_medium.png">https://prod-vector-labs-pimcore-assets.s3.us-east-1.amazonaws.com/assets/products/image/elite_medium.png</a>
<b>IHC Results</b>	Paraffin embedded Human Small Intestine. Recommended concentration: 3.75µg/ml.
<b>ELISA Detection Limit</b>	Antibody detection limit dilution 1:32000.
<b>Western Blot</b>	Approx 37kDa band observed in Human Colon, Duodenum and Ileum lysates (calculated MW of 38.2kDa according to NP_079374.2). Recommended concentration: 0.05-0.2µg/ml. Primary incubation was 1 hour.
<b>Application Type</b>	Pep-ELISA, WB, IHC

## DOCUMENTS

- [Data Sheet](#)

## GALLERY IMAGES

