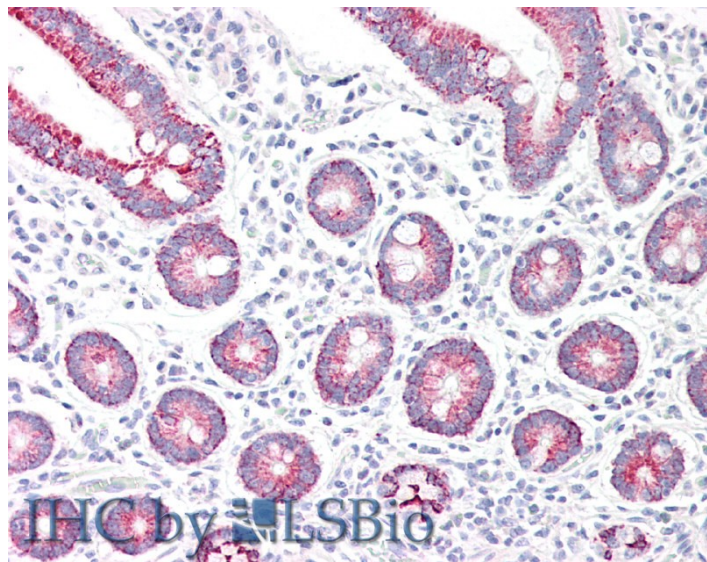


GOAT ANTI-MONOAMINE OXIDASE A ANTIBODY

SKU: EB06928



SPECIFICATIONS

Formulation Supplied at 0.5 mg/ml in Tris saline, 0.02% sodium azide, pH7.3 with 0.5% bovine serum albumin.

Unit Size 100 µg

Storage Instructions Aliquot and store at -20°C. Minimize freezing and thawing.

Synonym /

Alias RP1-201D17__B.2|MAOA|HGNC:6833|monoamine oxidase A

Names

Accession ID NP_000231.1

Blocking Peptide EBP06928

Immunogen Peptide with sequence C-DAPWEAQHADKWDK, from the internal region of the protein sequence according to NP_000231.1.

Peptide Sequence C-DAPWEAQHADKWDK

Purification Method Purified from goat serum by ammonium sulphate precipitation followed by antigen affinity chromatography using the immunizing peptide.

Shipping Instructions Refrigerated

Predicted Species	Human
Reactive Species	Human
Human Gene ID	4128
Product Grade	https://prod-vector-labs-pimcore-assets.s3.us-east-1.amazonaws.com/assets/products/image/elite_medium.png
IHC Results	Paraffin embedded Human Placenta and Small Intestine. Recommended concentration: 5µg/ml.
ELISA	
Detection Limit	Antibody detection limit dilution 1:64000.
Western Blot	Approx 70kDa band observed in Human Heart lysates (calculated MW of 60.0kDa according to NP_000231.1). The user is warned for non-specific background in Western blot. Recommended concentration: 0.1-0.3µg/ml. Primary incubation was 1 hour.
Application Type	Pep-ELISA, WB, IHC

DOCUMENTS

- [Data Sheet](#)

GALLERY IMAGES

