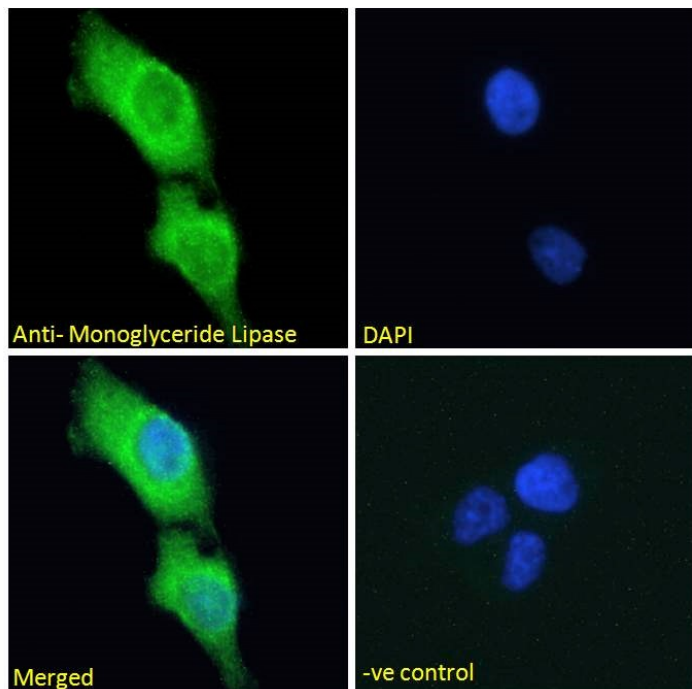


# GOAT ANTI-MONOGLYCERIDE LIPASE ANTIBODY

SKU: EB08850



## SPECIFICATIONS

**Formulation** Supplied at 0.5 mg/ml in Tris saline, 0.02% sodium azide, pH7.3 with 0.5% bovine serum albumin.

**Unit Size** 100 µg

**Storage Instructions** Aliquot and store at -20°C. Minimize freezing and thawing.

**Synonym /**

**Alias Names** lysophospholipase-like|MGL|MGLL|HU-K5|monoglyceride lipase

**Usage Summary** **Immunofluorescence:** Strong expression of the protein seen in the cytoplasm of U2OS and A431 cells. Recommended concentration: 10µg/ml. **Flow Cytometry:** Flow cytometric analysis of A431 cells. Recommended concentration: 10ug/ml.

**Accession ID** NP\_009214.1; NP\_001003794.1

**Blocking Peptide** EBP08850

**Immunogen** Peptide with sequence C-QDLPHLVNADGQY, from the internal region (near N Terminus) of the protein sequence according to NP\_009214.1; NP\_001003794.1.

<b>Product Comments</b>	This antibody is expected to recognize both reported isoforms (NP_009214.1; NP_001003794.1).
<b>Peptide Sequence</b>	C-QDLPHLVNADGQY
<b>Purification Method</b>	Purified from goat serum by ammonium sulphate precipitation followed by antigen affinity chromatography using the immunizing peptide.
<b>Shipping Instructions</b>	Refrigerated
<b>Predicted Species</b>	Human, Mouse, Rat, Dog, Cow
<b>Reactive Species</b>	Human, Mouse
<b>Human Gene ID</b>	11343
<b>Mouse Gene ID</b>	23945
<b>Rat Gene ID</b>	29254
<b>Product Grade</b>	<a href="https://prod-vector-labs-pimcore-assets.s3.us-east-1.amazonaws.com/assets/products/image/elite_plus_medium.png">https://prod-vector-labs-pimcore-assets.s3.us-east-1.amazonaws.com/assets/products/image/elite_plus_medium.png</a>
<b>IHC Results</b>	In paraffin embedded Human Liver, expression of MGLL is detected in hepatocytes. Recommended concentration: 5µg/ml.
<b>ELISA Detection Limit</b>	Antibody detection limit dilution 1:128000.
<b>Western Blot</b>	Approx 35kDa band observed in Mouse Adipose lysates and in preliminary testing of Human, Cerebellum lysate and in lysate of cell line NIH3T3 (calculated MW of 33.3kDa according to NP_001003794.1). Recommended concentration: 0.3-1µg/ml. Primary incubation 1 hour at room temperature. Preliminary testing was unsuccessful on Rat for this particular batch.
<b>Application Type</b>	Pep-ELISA, WB, IHC, IF, FC

## DOCUMENTS

- [Data Sheet](#)

## GALLERY IMAGES

