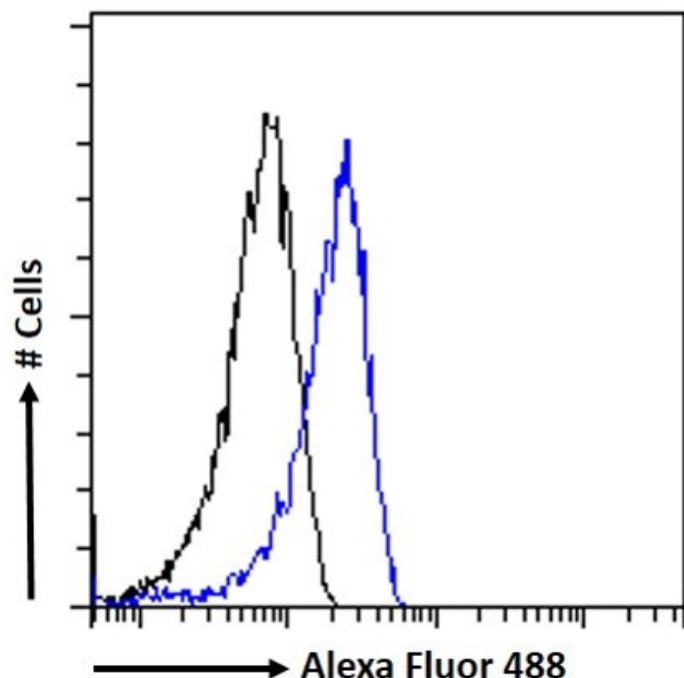


# GOAT ANTI-MS2 / ADAM8 / CD156 ANTIBODY

SKU: EB05399



## SPECIFICATIONS

<b>Formulation</b>	Supplied at 0.5 mg/ml in Tris saline, 0.02% sodium azide, pH7.3 with 0.5% bovine serum albumin.
<b>Unit Size</b>	100 µg
<b>Storage Instructions</b>	Aliquot and store at -20°C. Minimize freezing and thawing.
<b>Synonym / Alias Names</b>	human leukocyte differentiation antigen disintegrin and metalloproteinase domain-containing protein 8 cell surface antigen MS2 MS2 MGC134985 ADAM metalloproteinase domain 8 CD156 MS2 a disintegrin and metalloproteinase domain 8 CD156 ADAM8
<b>Usage Summary</b>	<p>&lt;p&gt;&lt;strong&gt;Flow Cytometry:&lt;/strong&gt; Flow cytometric analysis of Caco-2 cells. Recommended concentration: 10ug/ml.&lt;/p&gt;</p>
<b>Accession ID</b>	NP_001100.3; NP_001157962.1
<b>Blocking Peptide</b>	EBP05399
<b>Immunogen</b>	Peptide with sequence C-QRKQGAGAPTAP, from the C Terminus of the protein sequence according to NP_001100.3; NP_001157962.1.

<b>Product Comments</b>	This antibody is expected to recognise isoform 1 and 3 (NP_001100.3; NP_001157962.1).
<b>Peptide Sequence</b>	C-QRKQGAGAPTAP
<b>Purification Method</b>	Purified from goat serum by ammonium sulphate precipitation followed by antigen affinity chromatography using the immunizing peptide.
<b>Shipping Instructions</b>	Refrigerated
<b>Predicted Species</b>	Human
<b>Reactive Species</b>	Human
<b>Human Gene ID</b>	101
<b>Mouse Gene ID</b>	11501
<b>Product Grade</b>	<a href="https://prod-vector-labs-pimcore-assets.s3.us-east-1.amazonaws.com/assets/products/image/elite_plus_medium.png">https://prod-vector-labs-pimcore-assets.s3.us-east-1.amazonaws.com/assets/products/image/elite_plus_medium.png</a>
<b>IHC Results</b>	Paraffin embedded Human Lymph Node. Recommended concentration: 6-8µg/ml.
<b>ELISA Detection Limit</b>	Antibody detection limit dilution 1:16000.
<b>Western Blot</b>	Approx. 90kDa band observed in lysates of cell line Caco-2, approx. 80kDa in Human Duodenum lysates and approx. 85kDa in preliminary testing of MCF7 cell lysate (calculated MW of 88.8kDa according to NP_001100.3 and 78.8kDa according to NP_001157962.1). Recommended concentration: 1-3µg/ml. Primary incubation 1 hour at room temperature. <b>Positive Control:</b> A batch specific positive control lysate is available for this product. Please contact Sales@everestbiotech.com for availability.
<b>Application Type</b>	Pep-ELISA, WB, IHC, FC

## DOCUMENTS

- [Data Sheet](#)

## GALLERY IMAGES

