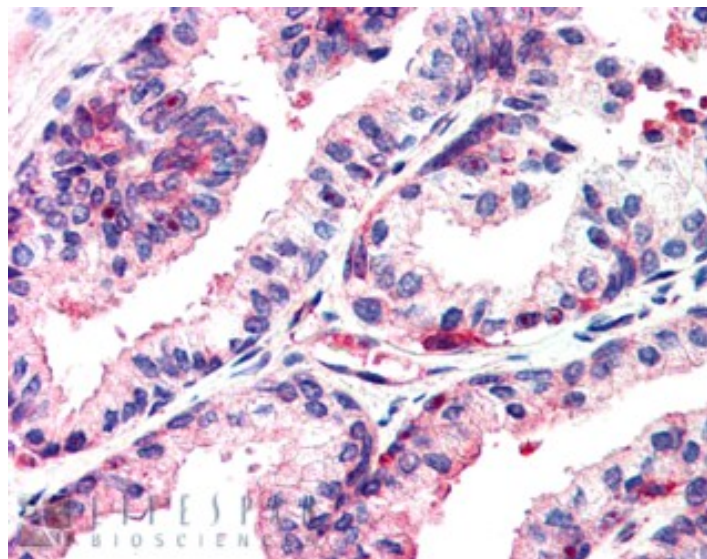


GOAT ANTI-MSX1 ANTIBODY

SKU: EB06397



SPECIFICATIONS

Formulation	Supplied at 0.5 mg/ml in Tris saline, 0.02% sodium azide, pH7.3 with 0.5% bovine serum albumin.
Unit Size	100 µg
Storage Instructions	Aliquot and store at -20°C. Minimize freezing and thawing.
Synonym / Alias Names	msh homeobox homolog 1 msh homeo box 1 homeobox 7 STHAG1 msh homeobox 1 msh homeo box homolog 1 (Drosophila) HYD1 HOX7 MSX1
Accession ID	NP_002439.2
Blocking Peptide	EBP06397
Immunogen	Peptide with sequence TSLPLGVKVEDS-C, from the N Terminus of the protein sequence according to NP_002439.2.
Peptide Sequence	TSLPLGVKVEDS-C
Purification Method	Purified from goat serum by ammonium sulphate precipitation followed by antigen affinity chromatography using the immunizing peptide.
Shipping Instructions	Refrigerated

Predicted Species	Human, Mouse, Rat, Pig, Cow
Reactive Species	Human
Human Gene ID	4487
Mouse Gene ID	17701
Product Grade	https://prod-vector-labs-pimcore-assets.s3.us-east-1.amazonaws.com/assets/products/image/elite_medium.png
IHC Results	In paraffin embedded Human Prostate shows staining of nucleoli in a few epithelial cells. Recommended concentration, 2-4µg/ml. Data obtained from a previous batch (different goat).
ELISA	
Detection Limit	Antibody detection limit dilution 1:64000.
Western Blot	Preliminary experiments gave an approx. 55-60kDa band in Human Muscle and Heart lysates at 1ug/ml. Further, this band was successfully blocked by incubation with the immunising peptide. Please note that currently we cannot find an explanation in the literature for the band we observe given the predicted size of approx. 31.4kDa according to Human NP_002439.2. We would appreciate any feedback from people in the field - have any results been reported with other antibodies/lysates? Have any further splice variants/modified forms been reported?
Application Type	Pep-ELISA, WB, IHC

DOCUMENTS

- [Data Sheet](#)

GALLERY IMAGES

