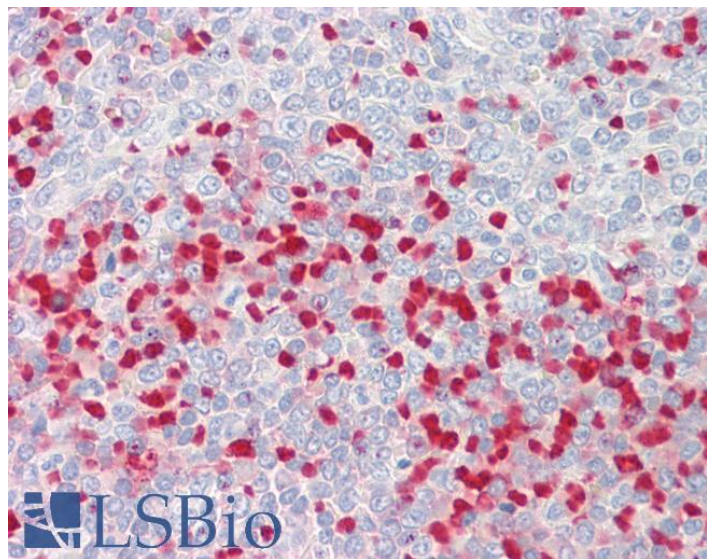


GOAT ANTI-MTHFR ANTIBODY

SKU: EB09354



SPECIFICATIONS

Formulation	Supplied at 0.5 mg/ml in Tris saline, 0.02% sodium azide, pH7.3 with 0.5% bovine serum albumin.
Unit Size	100 µg
Storage	Aliquot and store at -20°C. Minimize freezing and thawing.
Instructions	
Synonym / Alias	MTHFR 5, 10-methylenetetrahydrofolate reductase (NADPH) OTTHUMP00000002367 OTTHUMP00000002368 methylenetetrahydrofolate reductase intermediate
Names	form
Accession ID	NP_005948.3
Blocking Peptide	EBP09354
Immunogen	Peptide with sequence C-NRPTQNARETEAP, from the C Terminus of the protein sequence according to NP_005948.3.
Peptide Sequence	C-NRPTQNARETEAP
Purification Method	Purified from goat serum by ammonium sulphate precipitation followed by antigen affinity chromatography using the immunizing peptide.
Shipping Instructions	Refrigerated

Predicted Species	Human
Reactive Species	Human
Human Gene ID	4524
Product Grade	https://prod-vector-labs-pimcore-assets.s3.us-east-1.amazonaws.com/assets/products/image/elite_medium.png
IHC Results	Paraffin embedded Human Spleen. Recommended concentration: 3.75µg/ml.
ELISA	
Detection Limit	Antibody detection limit dilution 1:16000.
Western Blot	Preliminary experiments gave an approx 28kDa band in Human Brain (Cerebellum), Skeletal Muscle and Placenta lysates after 0.2µg/ml antibody staining. Please note that currently we cannot find an explanation in the literature for the band we observe given the calculated size of 74.6kDa according to NP_005948.3. The 28kDa band was successfully blocked by incubation with the immunizing peptide.
Application Type	Pep-ELISA, IHC

DOCUMENTS

- [Data Sheet](#)

GALLERY IMAGES

