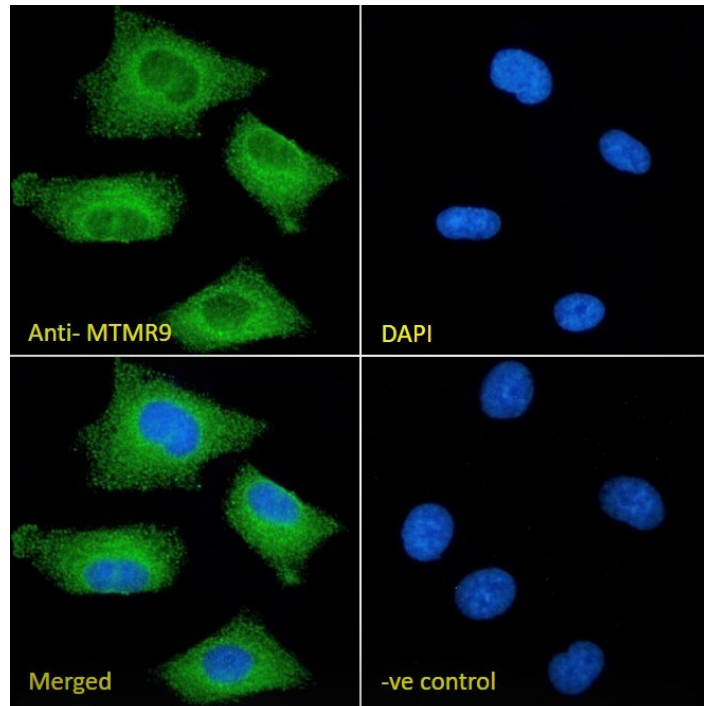




GOAT ANTI-MTMR9 (C TERMINUS) ANTIBODY

SKU: EB05189



SPECIFICATIONS

Formulation	Supplied at 0.5 mg/ml in Tris saline, 0.02% sodium azide, pH7.3 with 0.5% bovine serum albumin.
Unit Size	100 µg
Storage Instructions	Aliquot and store at -20°C. Minimize freezing and thawing.
Synonym / Alias Names	myotubularin-related protein 9 variant myotubularin-related protein 9 MGC126672 myotubularin related protein 8 DKFZp434K171 DKFZP434K171 LIP-STYX C8orf9 MTMR8 myotubularin related protein 9 MTMR9
Usage Summary	Immunofluorescence: Strong expression of the protein seen in the cytoplasm and Endoplasmic reticulum of A549 and U2OS cells. Recommended concentration: 10µg/ml. Flow Cytometry: Flow cytometric analysis of A549 cells. Recommended concentration: 10ug/ml.
Accession ID	NP_056273.2
Blocking Peptide	EBP05189
Immunogen	Peptide with sequence C-AELETEDGMQESP, from the C Terminus of the protein sequence according to NP_056273.2.

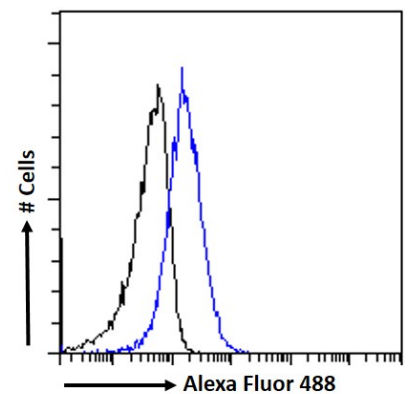
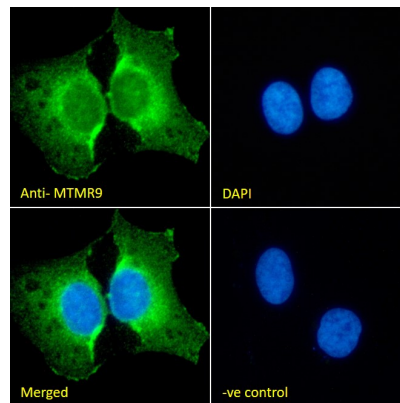
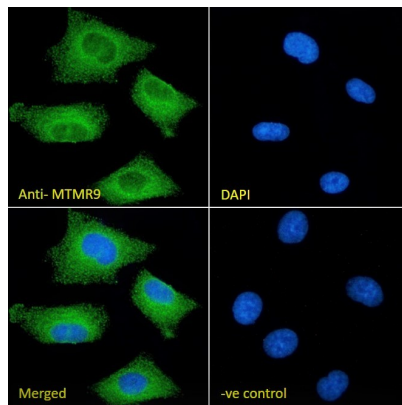


Peptide Sequence	C-AELETEDGMQESP
Purification Method	Purified from goat serum by ammonium sulphate precipitation followed by antigen affinity chromatography using the immunizing peptide.
Shipping Instructions	Refrigerated
Predicted Species	Human, Mouse, Rat
Reactive Species	Human, Rat
Human Gene ID	66036
Product Grade	https://prod-vector-labs-pimcore-assets.s3.us-east-1.amazonaws.com/assets/products/image/elite_plus_medium.png
IHC Results	In paraffin embedded Rat Spleen shows staining of cytoplasm in select cells. Recommended concentration: 5-10µg/ml. This product has also been successfully used on Rat Hypothalamus.
ELISA	
Detection Limit	Antibody detection limit dilution 1:8000.
Application Type	Pep-ELISA, IF, IHC, FC

DOCUMENTS

- [Data Sheet](#)

GALLERY IMAGES





www.everestbiotech.com

Email: customerservice@vectorlabs.com

Telephone: [\(650\) 697-3600](tel:(650)697-3600)

