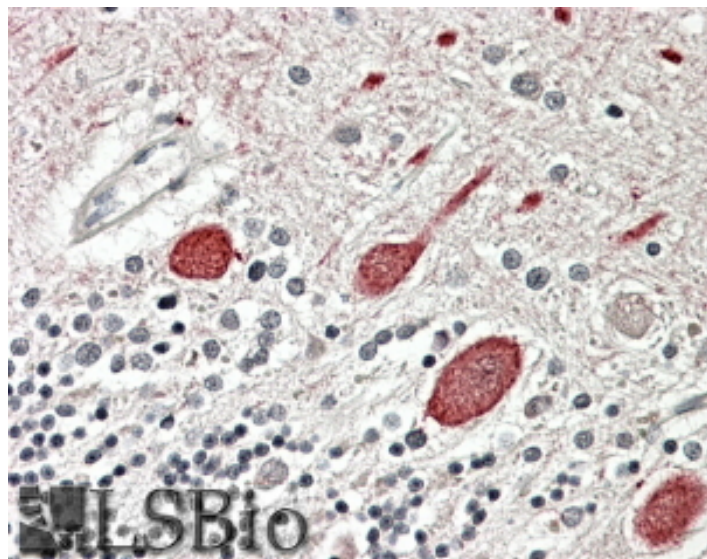


GOAT ANTI-MTNR1B ANTIBODY

SKU: EB09089



SPECIFICATIONS

Formulation Supplied at 0.5 mg/ml in Tris saline, 0.02% sodium azide, pH7.3 with 0.5% bovine serum albumin.

Unit Size 100 µg

Storage Instructions Aliquot and store at -20°C. Minimize freezing and thawing.

Synonym /

Alias Names MTNR1B|melatonin receptor 1B|MEL-1B-R|MT2|melatonin receptor MEL1B|melatonin receptor type 1B

Accession ID NP_005950.1

Blocking Peptide EBP09089

Immunogen Peptide with sequence C-QDASKGSHA EGLQSP, from the C Terminus of the protein sequence according to NP_005950.1.

Peptide Sequence C-QDASKGSHA EGLQSP

Purification Method Purified from goat serum by ammonium sulphate precipitation followed by antigen affinity chromatography using the immunizing peptide.

Shipping Instructions Refrigerated

Predicted Species	Human
Reactive Species	Human
Human Gene ID	4544
Product Grade	https://prod-vector-labs-pimcore-assets.s3.us-east-1.amazonaws.com/assets/products/image/elite_medium.png
IHC Results	In paraffin embedded Human Cerebellum shows membranous staining primarily in Purkinje cells. Recommended concentration, 3-6µg/ml.
ELISA	
Detection Limit	Antibody detection limit dilution 1:32000.
Western Blot	Preliminary experiments gave approx .48kDa and 37kDa bands in Human Brain (Cerebellum) lysates after 1µg/ml antibody staining. Please note that currently we cannot find an explanation in the literature for the band we observe given the calculated size of 40.2kDa according to NP_005950.1. The 48kDa and 37kDa bands were successfully blocked by incubation with the immunizing peptide. We would appreciate any feedback from people in the field - have any results been reported with other antibodies/lysates? Have any further splice variants/modified forms been reported?
Application Type	Pep-ELISA, IHC

DOCUMENTS

- [Data Sheet](#)

GALLERY IMAGES

