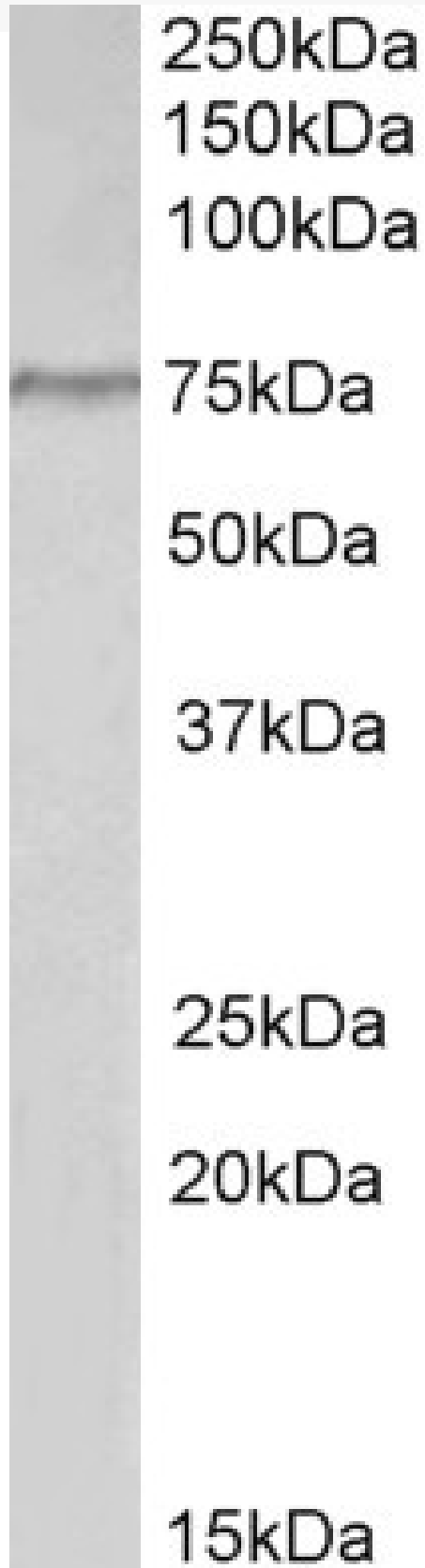


GOAT ANTI-TORC2 (MOUSE) ANTIBODY

SKU: EB07793



SPECIFICATIONS

Formulation	Supplied at 0.5 mg/ml in Tris saline, 0.02% sodium azide, pH7.3 with 0.5% bovine serum albumin.
Unit Size	100 µg
Storage Instructions	Aliquot and store at -20°C. Minimize freezing and thawing.
Synonym / Alias Names	transducer of regulated cAMP response element-binding protein (CREB) 2 Torc2 4632407F12Rik CREB regulated transcription coactivator 2 Crtc2
Accession ID	NP_083157.1
Blocking Peptide	EBP07793
Immunogen	Peptide with sequence QDPHVLNHQNLTHC, from the internal region of the protein sequence according to NP_083157.1.
Peptide Sequence	QDPHVLNHQNLTHC
Purification Method	Purified from goat serum by ammonium sulphate precipitation followed by antigen affinity chromatography using the immunizing peptide.
Shipping Instructions	Refrigerated
Predicted Species	Human, Mouse, Rat, Dog
Reactive Species	Human
Mouse Gene ID	74343
Product Grade	https://prod-vector-labs-pimcore-assets.s3.us-east-1.amazonaws.com/assets/products/image/elite_medium.png
ELISA Detection Limit	Antibody detection limit dilution 1:128000.
Western Blot	Approx 75kDa band observed in lysates of cell line Hela (calculated MW of 73.2kDa according to NP_083157.1). Recommended concentration: 2-6µg/ml.
Application Type	Pep-ELISA, WB

DOCUMENTS

- [Data Sheet](#)

GALLERY IMAGES

