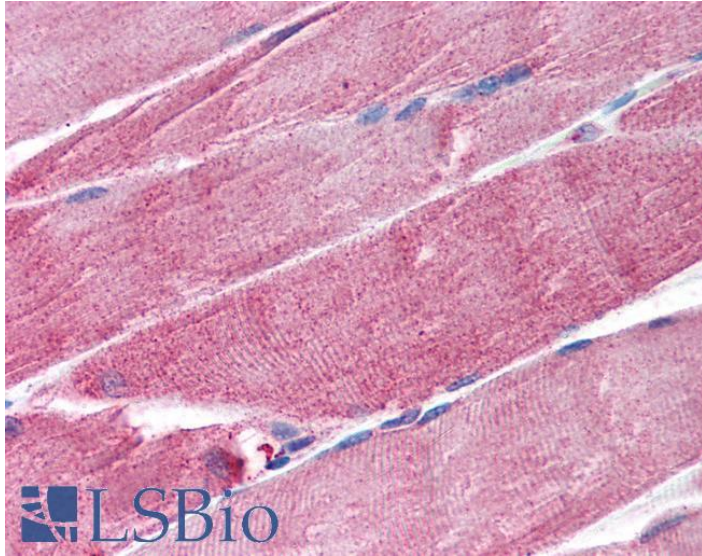




# GOAT ANTI-MURF1 / TRIM63 (INTERNAL) ANTIBODY

SKU: EB07039



## SPECIFICATIONS

**Formulation** Supplied at 0.5 mg/ml in Tris saline, 0.02% sodium azide, pH7.3 with 0.5% bovine serum albumin.

**Unit Size** 100 µg

**Storage Instructions** Aliquot and store at -20°C. Minimize freezing and thawing.

**Synonym / Alias** striated muscle RING zinc finger protein|ring finger protein 28|muscle specific ring finger protein 2|muscle specific ring finger protein 1|iris ring finger

**Names** protein|SMRZ|RNFB28|MURF2|MURF1|IRF|FLJ32380|HGNC:16007|tripartite motif-containing 63|TRIM63

**Accession ID** NP\_115977.2

**Blocking Peptide** EBP07039

**Immunogen** Peptide with sequence C-QQYQEQLDKSTKLVE, from the internal region of the protein sequence according to NP\_115977.2.

**Peptide Sequence** C-QQYQEQLDKSTKLVE

**Purification Method** Purified from goat serum by ammonium sulphate precipitation followed by antigen affinity chromatography using the immunizing peptide.

**Shipping Instructions** Refrigerated



<b>Predicted Species</b>	Human, Mouse, Rat, Dog, Cow
<b>Reactive Species</b>	Human
<b>Human Gene ID</b>	84676
<b>Product Grade</b>	<a href="https://prod-vector-labs-pimcore-assets.s3.us-east-1.amazonaws.com/assets/products/image/elite_medium.png">https://prod-vector-labs-pimcore-assets.s3.us-east-1.amazonaws.com/assets/products/image/elite_medium.png</a>
<b>IHC Results</b>	Paraffin embedded Human Skeletal Muscle. Recommended concentration: 1.25µg/ml.
<b>ELISA</b>	
<b>Detection Limit</b>	Antibody detection limit dilution 1:32000.
<b>Application Type</b>	Pep-ELISA, IHC

## DOCUMENTS

- [Data Sheet](#)

## GALLERY IMAGES

