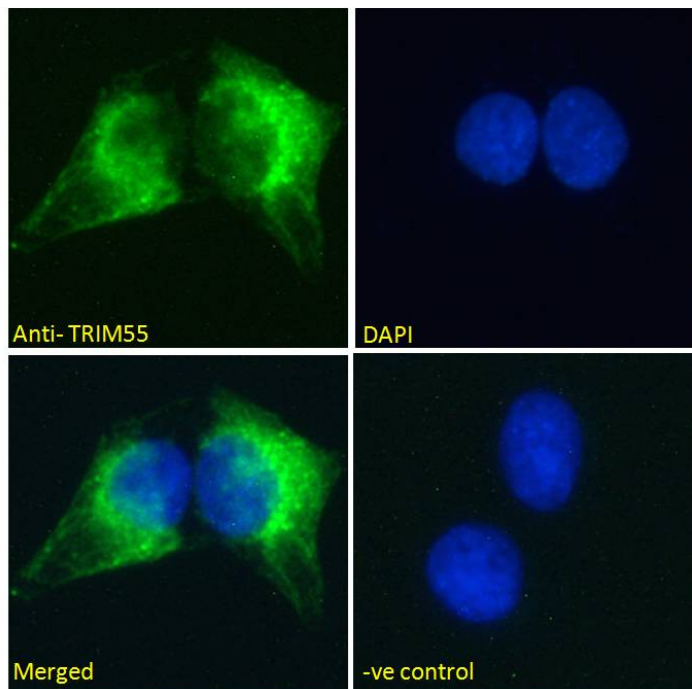


GOAT ANTI-MURF2 / TRIM55 ANTIBODY

SKU: EB05882



SPECIFICATIONS

Formulation Supplied at 0.5 mg/ml in Tris saline, 0.02% sodium azide, pH7.3 with 0.5% bovine serum albumin.

Unit Size 100 µg

Storage Instructions Aliquot and store at -20°C. Minimize freezing and thawing.

Synonym / Alias Names muscle specific ring finger 2|tripartite motif-containing 55|for muscle specific ring finger 2|ring finger protein 29|MURF-2|RNF29|TRIM55

Usage Summary **Immunofluorescence:** Strong expression of the protein seen in the Golgi and cytoplasm of U2OS cells. Recommended concentration: 10µg/ml. **Flow Cytometry:** Flow cytometric analysis of HeLa cells. Recommended concentration: 10ug/ml.

Accession ID NP_908973.1; NP_908974.1; NP_908975.1

Blocking Peptide EBP05882

Immunogen Peptide with sequence C-HIFSFSWLNSLNE, from the C Terminus of the protein sequence according to NP_908973.1; NP_908974.1; NP_908975.1.

Product Comments	This antibody is expected to recognize isoforms 1, 3 and 4 (NP_908973.1, NP_908974.1 and NP_908975.1 resp.).
Peptide Sequence	C-HIFSFSWLNSLNE
Purification Method	Purified from goat serum by ammonium sulphate precipitation followed by antigen affinity chromatography using the immunizing peptide.
Shipping Instructions	Refrigerated
Predicted Species	Human, Mouse, Rat, Dog, Pig
Reactive Species	Human
Human Gene ID	84675
Mouse Gene ID	381485
Rat Gene ID	365751
Product Grade	https://prod-vector-labs-pimcore-assets.s3.us-east-1.amazonaws.com/assets/products/image/elite_plus_medium.png
IHC Results	Paraffin embedded Human Heart. Recommended concentration: 10µg/ml.
ELISA	
Detection Limit	Antibody detection limit dilution 1:16000.
Western Blot	Approx 58kDa band observed in lysates of cell line HeLa (calculated MW of 60.5kDa according to NP_908973.1). Recommended concentration: 1-3µg/ml. Primary incubation 1 hour at room temperature
Application Type	Pep-ELISA, WB, IHC, IF, FC

DOCUMENTS

- [Data Sheet](#)

GALLERY IMAGES

